

# Seasafe Transport A/S



PRODUCT CATALOGUE 2005

## **Introducing Seasafe Transport AS**

With more than 30 years of experience, Seasafe has proven its position as a leading consultant for the design of cargo stowage and securing systems, and as a total supplier of high quality cargo securing equipment.

As a total supplier, it has always been Seasafe policy not only to sell lashing equipment, but to solve lashing problems and to design lashing systems in close cooperation with our customers. It is mandatory for Seasafe to ensure that we understand what our customer wants, and that we are certain to have presented the best possible alternatives and solutions for the particular project, prior to accepting an order from our customer.

Seasafe is here to meet your specific needs; including type of cargo and trade, ship characteristics, and so on. Our employees design and deliver lashing systems for all types of cargo carrying vessels, and the presented solutions result from close consultation and cooperation with naval architects, shipowners and yards, as well as terminal management, classification societies and other experts on cargo stowage and securing.

As consultants, we are continuously developing and improving existing designs and solutions, and strive to be in the forefront in the development of new lashing methods and principles. With the increasing demand for better efficiency, the requirement for solutions which could revolutionize the way cargoes are stowed and secured is becoming ever more apparent. It is Seasafe's ambition to be a part of this development both as an independent company and in cooperation with partners looking at transport and logistics as a whole.

Seasafe is working directly with our own production staff and with partners and manufacturers to ensure that a high level of quality is maintained throughout the organisation, from sales and customer service to design, production and equipment delivery.

The reason for Seasafe's growth and success lies in the company's aspiration to know its customers and partners, and to be a part of their teams. Our customers have throughout the years learnt to appreciate Seasafe's willingness and success in developing effective and safe lashings which meet their special needs. We invite you to take advantage of the Seasafe policy of cooperation, so that we together can design the best and safest lashing system possible, and provide quality components for that system.








Please feel free to contact us for further information. We are eagerly awaiting your business.

Oslo, Norway  
June 2005



## **Design specifications:**

Products offered by Seasafe are designed and manufactured in accordance with recommendations, regulations and requirements from major classification societies and maritime organisations including:

-  American Bureau of Shipping
-  Bureau Veritas
-  Det Norske Veritas
-  Germanischer Lloyd
-  Lloyd's Register of Shipping
  
-  the International Maritime Organisation
-  OSHA

The products shown in this catalogue represent only a selection of what Seasafe has to offer. Other system designs and products are available upon request. Tailor made solutions may be presented based on customer requirements and specifications.

All products are supplied with workshop test certificates indicating equipment strength and allowable work loads. Material certificates may be presented upon request. Equipment may also be supplied with classification society certification upon customer request.

Design and dimensions shown in this catalogue are intended for guidance only, and should not be used for other purposes without confirmation in writing from Seasafe Transport AS. These are not binding and subject to change without further notice.

Specified equipment strengths are design loads based on the designs presented. These may be higher than load limits shown in classification society approval documents or certificates related to specific projects.

## **Notice and terms of use:**

Seasafe Transport AS shall not be responsible or liable in negligence or otherwise howsoever in respect of any inaccuracy or omission herein. Without derogating from the generality of the foregoing, Seasafe Transport AS shall not be liable for any indirect or consequential loss caused by or arising from any information, advice or inaccuracy or omission herein.

## **Copyright © Seasafe Transport AS:**

This catalogue is intended as guidance for Seasafe customers. Reproduction or copying in any form or by any means is prohibited without the prior written consent of Seasafe Transport AS.



# Table of contents



| Topic                                  | Page | Topic                                | Page |
|--|------|--------------------------------------|------|
| Introduction .....                     | 1    | Trailer horses .....                 | 47   |
| Specifications .....                   | 2    | Trailer jacks .....                  | 48   |
| Table of contents .....                | 3    | Wheel chocks .....                   | 48   |
| Alphabetical index .....               | 4    | Railway jacks & chocks .....         | 49   |
| Fixed equipment .....                  | 5    | Corner protectors .....              | 50   |
| Flush ISO foundations .....            | 5    | Cargo nets & dunnage bags .....      | 51   |
| Flush ISO / el.foot foundation .....   | 6    | Web lashings .....                   | 52   |
| Raised ISO sliding foundations .....   | 7    | Timber lashing .....                 | 53   |
| Raised ISO foundations .....           | 8    | Lashing bins & racks .....           | 54   |
| Dovetail foundations .....             | 9    | Roll-Lash .....                      | 55   |
| Container foundations .....            | 10   | Semi trailer lashing .....           | 56   |
| Raised ISO feefer foundations .....    | 11   | Car lashing & roll trailer arr. .... | 57   |
| Flush keyhole foundation .....         | 12   | Ships equipment .....                | 58   |
| Flush lashing points .....             | 13   | Chocks & bollards .....              | 58   |
| Non flush lashing points .....         | 14   | Roller chocks & fairleads .....      | 59   |
| Lifting ISO foundations .....          | 15   | Container spreaders .....            | 60   |
| Fixed lashing plates .....             | 16   | Water treatment .....                | 61   |
| Elephant foot foundations.....         | 17   | Mooring ropes .....                  | 62   |
| Fixed car lashing points .....         | 18   | Cargo securing systems .....         | 63   |
| Welding cones / guide fittings .....   | 19   | Notes .....                          | 64   |
| ISO container corner fittings .....    | 20   |                                      |      |
| Container spesifications .....         | 21   |                                      |      |
| Cell guide systems .....               | 23   |                                      |      |
| Container support arrangement .....    | 24   |                                      |      |
| Loose equipment .....                  | 25   |                                      |      |
| Turnbuckles, closed type .....         | 25   |                                      |      |
| Turnbuckles, open type .....           | 26   |                                      |      |
| Lashing rods .....                     | 27   |                                      |      |
| Lashing rods & wires with steps .....  | 28   |                                      |      |
| Securing pads & hooks .....            | 29   |                                      |      |
| Container lifting hooks .....          | 29   |                                      |      |
| Stacking cones & locking pins .....    | 30   |                                      |      |
| Compensating spacers .....             | 31   |                                      |      |
| Twistlocks .....                       | 32   |                                      |      |
| Stackers .....                         | 33   |                                      |      |
| D-ring foundations .....               | 34   |                                      |      |
| Screw bridge fittings .....            | 35   |                                      |      |
| Linkage plates, plugs, actuators ..... | 36   |                                      |      |
| Side supports .....                    | 37   |                                      |      |
| Paralash system .....                  | 38   |                                      |      |
| Chain lashing .....                    | 40   |                                      |      |
| Securing devices for chain .....       | 41   |                                      |      |
| Chain tensioners .....                 | 42   |                                      |      |
| Quick lash & trailer winch .....       | 44   |                                      |      |
| Speedlash .....                        | 45   |                                      |      |
| Speedlash accessories .....            | 46   |                                      |      |





# Alphabetical index



|   |            |             |  |  |  |             |
|---|------------|-------------|--|--|--|-------------|
| <b>A</b>                                |            | <b>Page</b> |  | <b>L</b>                               |  | <b>Page</b> |
| Actuator pole .....                     |            | 36          |  | Lashing bins .....                     |  | 54          |
| <b>B</b>                                |            |             |  | Lashing plates .....                   |  | 16          |
| Bollards .....                          |            | 58          |  | Lashing rod .....                      |  | 27, 28      |
| Bottom stacking cone .....              | 10, 19, 30 |             |  | Lifting ISO sockets .....              |  | 15          |
| Breech base socket / twistlock ....     | 10, 32, 34 |             |  | Linkage plate .....                    |  | 36          |
| Bridge fitting .....                    |            | 35          |  | Load binder .....                      |  | 43          |
| <b>C</b>                                |            |             |  | <b>M</b>                               |  |             |
| Car lashing .....                       | 18, 52     |             |  | Mafi jack .....                        |  | 48          |
| Cargo net .....                         |            | 51          |  | Mooring equipment .....                |  | 58, 59, 62  |
| Cell guides .....                       |            | 23          |  | <b>P</b>                               |  |             |
| Chain hooks .....                       | 29, 41     |             |  | Pad eyes .....                         |  | 53          |
| Chain lever .....                       |            | 42          |  | Paralash .....                         |  | 38, 39      |
| Chain turnbuckle .....                  | 43, 44     |             |  | Penguin hooks .....                    |  | 29          |
| Chain, deck lashing .....               |            | 53          |  | Plastic plug for cloverleaf socket ... |  | 36          |
| Chain .....                             |            | 40          |  | Plug remover .....                     |  | 36          |
| Chocks, free standing / in bulwark .... |            | 58          |  | <b>R</b>                               |  |             |
| Cloverleaf D-ring, convex, flush ....   |            | 17          |  | Rack and pinion jack .....             |  | 49          |
| Container corner fittings .....         |            | 20          |  | Railway jack .....                     |  | 49          |
| Container lifting hooks .....           |            | 29          |  | Railway lashing .....                  |  | 49          |
| Container specifications .....          | 21, 22     |             |  | Raised ISO deck socket .....           |  | 8           |
| Container spreaders .....               |            | 60          |  | Raised ISO lifting / crawfoot socket . |  | 15          |
| Container supports .....                |            | 24          |  | Reefer foundation .....                |  | 11          |
| Corner protectors .....                 |            | 50          |  | Roller chocks / fairleads .....        |  | 59          |
| <b>D</b>                                |            |             |  | Roll-lash .....                        |  | 55          |
| Deck lashing .....                      |            | 53          |  | Rubber plug for ISO hole .....         |  | 36          |
| Dovetail socket / twistlock ....        | 9, 32      |             |  | <b>S</b>                               |  |             |
| D-rings / foundations .....             | 14, 34     |             |  | Self hanging stacker .....             |  | 33          |
| Dunnage bags .....                      |            | 51          |  | Semi-automatic twistlock .....         |  | 33          |
| <b>E</b>                                |            |             |  | Shackles .....                         |  | 29          |
| Elephant foot foundations .....         |            | 17          |  | Side supports .....                    |  | 37          |
| Extension handle for lever .....        |            | 42          |  | Sliding board .....                    |  | 51          |
| Extension rod .....                     |            | 27          |  | Sliding raised ISO deck socket ...     |  | 7           |
| <b>F</b>                                |            |             |  | Sliphook .....                         |  | 53          |
| Fenders .....                           |            | 51          |  | Spacers .....                          |  | 31          |
| Flush car lashing pot .....             |            | 18          |  | Speedlash .....                        |  | 45, 46      |
| Flush D-ring .....                      |            | 13          |  | Stacking cones .....                   |  | 10, 19, 30  |
| Flush ISO deck socket .....             |            | 5           |  | <b>T</b>                               |  |             |
| Flush ISO lifting socket .....          |            | 15          |  | Timber lashing .....                   |  | 53          |
| Flush ISO / cloverleaf socket ....      |            | 6           |  | Trailer horses .....                   |  | 47          |
| Flush key hole socket .....             |            | 12          |  | Trailer jacks .....                    |  | 48          |
| Flush pin foundation .....              |            | 13          |  | Turnbuckles .....                      |  | 25, 26      |
| <b>G</b>                                |            |             |  | Twistlocks .....                       |  | 32, 33      |
| Guide fittings .....                    |            | 19          |  | <b>W</b>                               |  |             |
| <b>H</b>                                |            |             |  | Walking board .....                    |  | 51          |
| Hooks .....                             | 29, 41     |             |  | Water treatment .....                  |  | 61          |
| <b>K</b>                                |            |             |  | Web lashing .....                      |  | 44, 52      |
| Key hole foundation .....               |            | 12          |  | Web straps / slings .....              |  | 52          |
|   |            |             |  | Welding cone .....                     |  | 10, 19      |
|   |            |             |  | Wheel chocks .....                     |  | 48          |



**Seasafe Transport A/S**

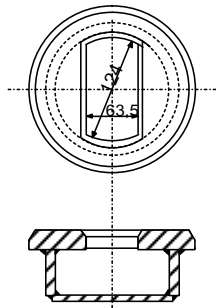
**YOU NAME IT - WE LASH IT**

Filipstadveien 5, N-0250 OSLO, Norway Phone: + 47 - 23 23 96 00 Telefax: + 47 - 23 23 96 01 E-mail: post@seasafe.no

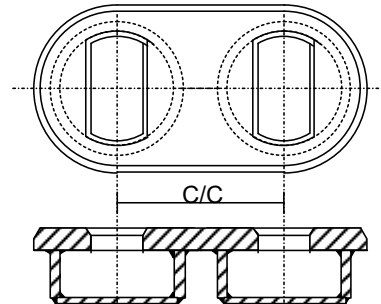
# Flush ISO foundations

# A 1

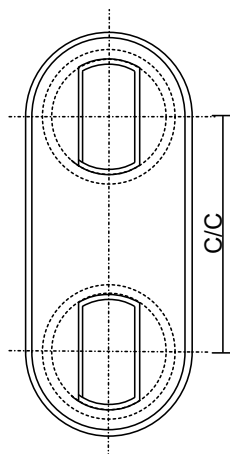
**A1.1**  
Single



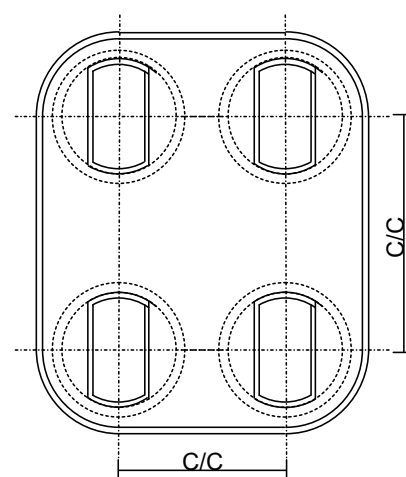
**A1.2**  
Double  
transversal



**A1.3**  
Double  
longitudinal



**A1.4**  
Quadruple



| Type  | Gap<br>mm | C/C<br>mm | MBL (kN)<br>tension | Weight<br>(kg) | Dimensions<br>mm |
|-------|-----------|-----------|---------------------|----------------|------------------|
| A 1.1 | ---       | ---       | 500                 | 8,5            | Ø205x90          |
| A 1.2 | 25        | 203       | 500                 | 19,0           | 408x205x90       |
|       | 80        | 258       | 500                 | 21,5           | 463x205x90       |
| A 1.3 | 76        | 279       | 500                 | 22,5           | 484x205x90       |
| A 1.4 | 25/76     | 203/279   | 500                 | 61,0           | 484x408x90       |
|       | 80/76     | 258/279   | 500                 | 67,0           | 484x463x90       |

General specifications:

Material: Shipbuilding steel.

Finnish: Black or primer.

Certificate: Workshop certificate, class certificate upon request.

Remark: Other design, dimensions, material and finish upon request.



**Seasafe Transport A/S**

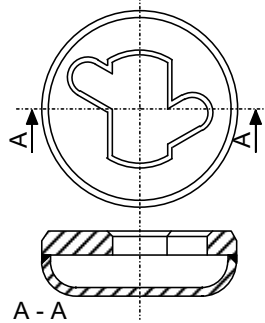
**YOU NAME IT - WE LASH IT**

Filipstadveien 5, N-0250 OSLO, Norway Phone: + 47 - 23 23 96 00 Telefax: + 47 - 23 23 96 01 E-mail: post@seasafe.no

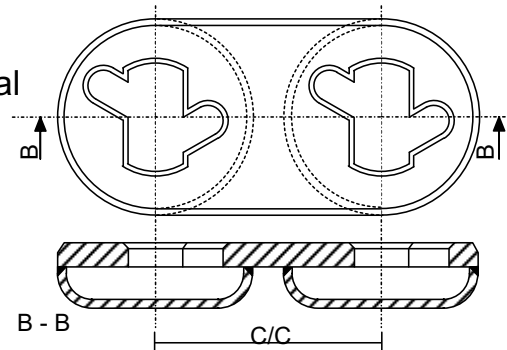
# Flush ISO / el.foot foundations

# A 2

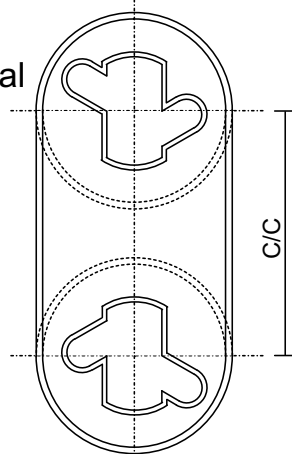
**A 2.1**  
Single



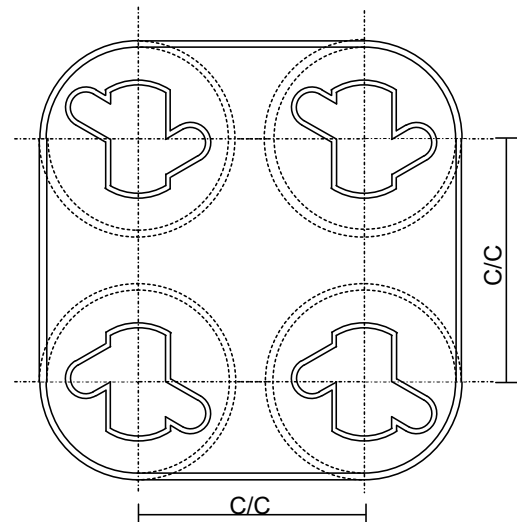
**A 2.2**  
Double  
transversal



**A 2.3**  
Double  
longitudinal



**A 2.4**  
Quadruple



| Type  | Gap<br>mm | C/C<br>mm | MBL (kN)<br>tension | Weight<br>(kg) | Dimensions<br>mm |
|-------|-----------|-----------|---------------------|----------------|------------------|
| A 2.1 | ---       | ---       | 400                 | 11,5           | Ø225x75          |
| A 2.2 | 80        | 258       | 400                 | 27             | 483x225x75       |
| A 2.3 | 76        | 279       | 400                 | 28             | 504x225x75       |
| A 2.4 | 80/76     | 258/279   | 400                 | 62,0           | 504x483x75       |

General specifications:

Material: Shipbuilding steel.  
 Finish: Black or primer.  
 Certificate: Workshop certificate, class certificate upon request.  
 Remark: Other design, dimensions, material and finish upon request.



**Seasafe Transport A/S**

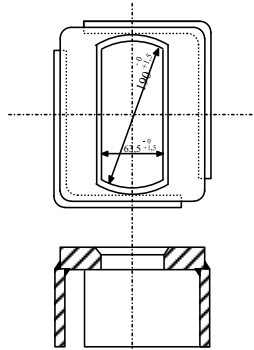
**YOU NAME IT - WE LASH IT**

Filipstadveien 5, N-0250 OSLO, Norway Phone: + 47 - 23 23 96 00 Telefax: + 47 - 23 23 96 01 E-mail: post@seasafe.no

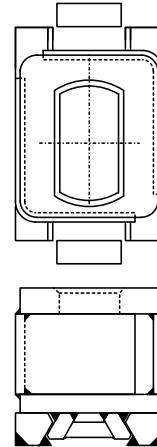
# Raised ISO sliding foundations

A 3

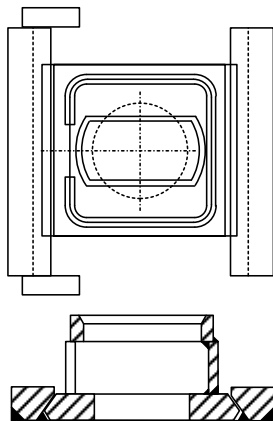
Enlarged ISO hole



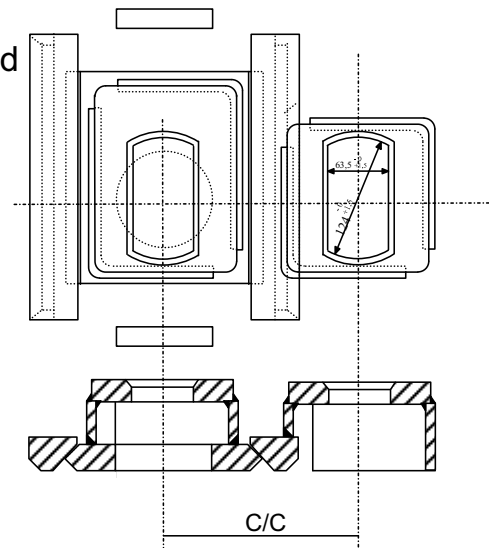
Internal dovetail sliding.



Dovetail sliding



Dovetail sliding/fixd



## Raised ISO sliding foundations:

Raised ISO sliding foundations are supplied in accordance with customer specific requirements.

Although a general standard is available, the project specific details are significantly affecting the general design to such an extent that it is not appropriate to include further details in this catalogue.

Detail drawings available upon request.

## General specifications:

Material: Shipbuilding steel.

Finnish: Black or primer.

Certificate: Workshop certificate, class certificate upon request.

Remark: Design, dimensions, material and finish upon request.



**Seasafe Transport A/S**

**YOU NAME IT - WE LASH IT**

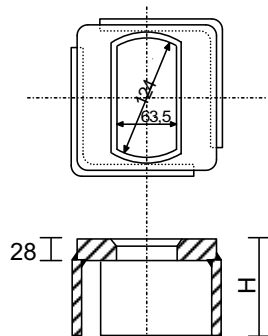
Filipstadveien 5, N-0250 OSLO, Norway Phone: + 47 - 23 23 96 00 Telefax: + 47 - 23 23 96 01 E-mail: post@seasafe.no



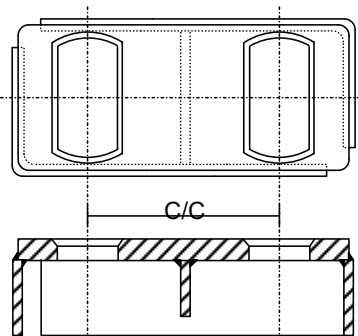
# Raised ISO foundations

# A 4

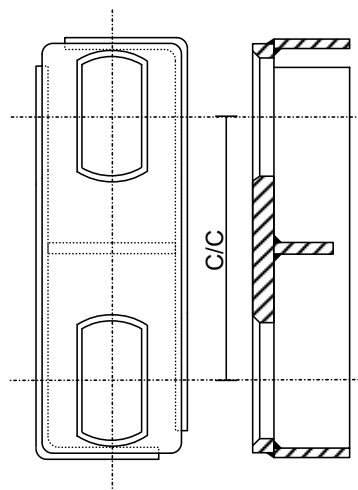
## A 4.1 Single



## A 4.2 Double transversal



## A 4.3 Double longitudinal



| Type  | Gap<br>mm | C/C<br>mm  | MBL (kN)<br>tension | Weight<br>(kg) | Dimensions<br>mm           |
|-------|-----------|------------|---------------------|----------------|----------------------------|
| A 4.1 | ---       | ---        | 500                 | 7              | 160x160x110                |
| A 4.2 | 25<br>80  | 203<br>258 | 500<br>500          | 16,5<br>18     | 363x160x110<br>418x160x110 |
| A 4.3 | 76        | 279        | 500                 | 19             | 439x160x110                |

### General specifications:

- Material: Shipbuilding steel.
- Finnish: Black or primer.
- Certificate: Workshop certificate, class certificate upon request.
- Remark: Other design, dimensions, material and finish upon request.



**Seasafe Transport A/S**

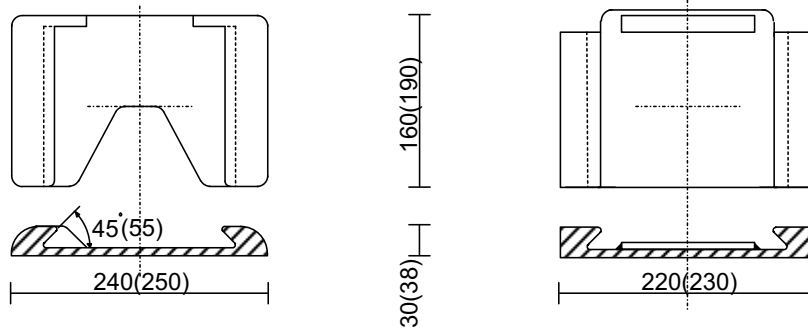
**YOU NAME IT - WE LASH IT**

Filipstadveien 5, N-0250 OSLO, Norway Phone: + 47 - 23 23 96 00 Telefax: + 47 - 23 23 96 01 E-mail: post@seasafe.no

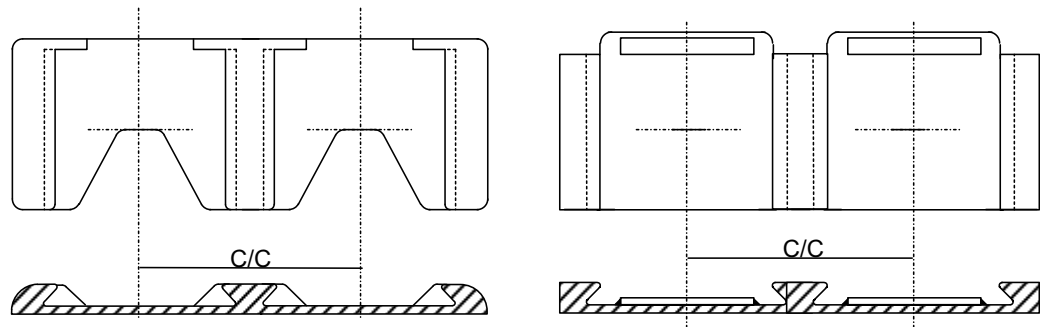
# Dovetail foundations

# A 5

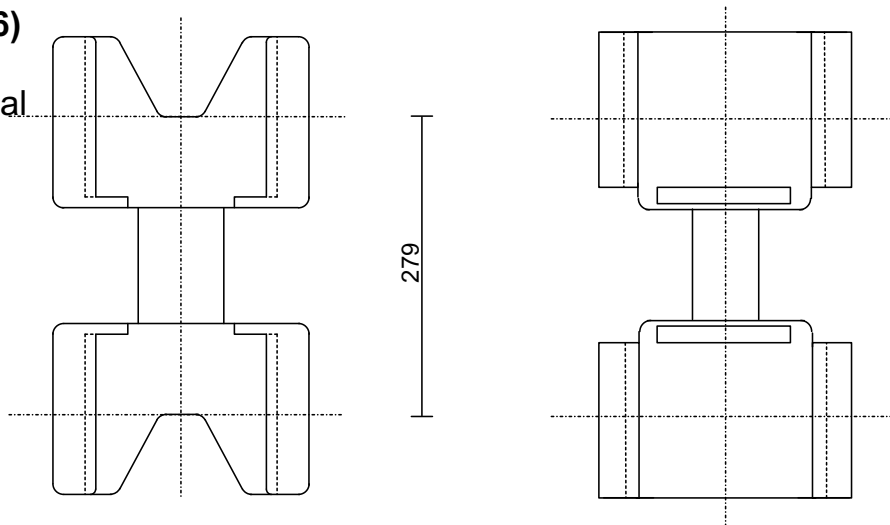
## A5.1(A5.4) Single



## A5.2(A5.5) Double transversal



## A5.3(A5.6) Double longitudinal



| Type  | Gap mm   | C/C mm     | MBL (kN) tension | Weight (kg) | Dimensions mm            |
|-------|----------|------------|------------------|-------------|--------------------------|
| A 5.1 | ---      | ---        | 400              | 3,5         | 220x160x30               |
| A 5.2 | 25<br>80 | 203<br>258 | 400<br>400       | 7<br>7,5    | 423x160x30<br>478x160x30 |
| A 5.3 | 76       | 279        | 400              | 7,5         | 416x220x30               |

### General specifications:

|              |   |
|--------------|---|
| Material:    | Shipbuilding steel.   |
| Finnish:     | Black or primer.  |
| Certificate: | Workshop certificate, class certificate upon request.       |
| Remark:      | Other design, dimensions, material and finish upon request. |



**Seasafe Transport A/S**

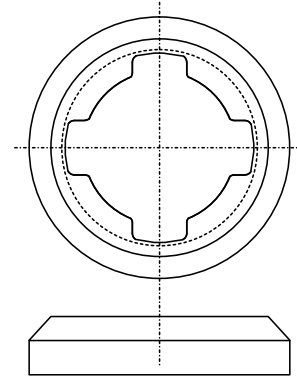
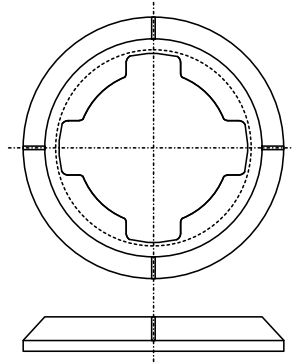
**YOU NAME IT - WE LASH IT**

Filipstadveien 5, N-0250 OSLO, Norway Phone: + 47 - 23 23 96 00 Telefax: + 47 - 23 23 96 01 E-mail: post@seasafe.no

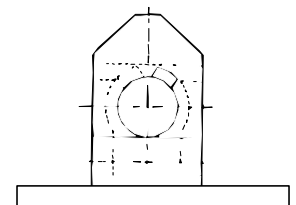
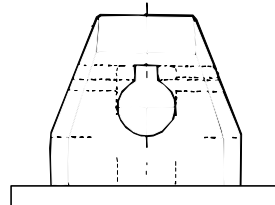
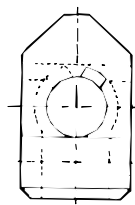
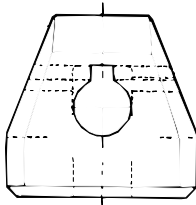
# Container foundations

## A 6 - A 7

### A 6 Breech base deckfitting



### A 7 Bottom stacking cone for locking pin



| Type | Gap mm | C/C mm | MBL (kN) tension | Weight (kg) | Dimensions mm |
|------|--------|--------|------------------|-------------|---------------|
| A 6  | ---    | ---    | 420              | 8,5         | Ø205x90       |
| A 7  | ---    | ---    | ---              | 19,0        | 408x205x90    |

Detail drawings available upon request.

#### General specifications:

Material: Cast / forged steel.  
 Finish: Black or primer.  
 Certificate: Workshop certificate, class certificate upon request.  
 Remark: Other design, dimensions, material and finish upon request.



**Seasafe Transport A/S**

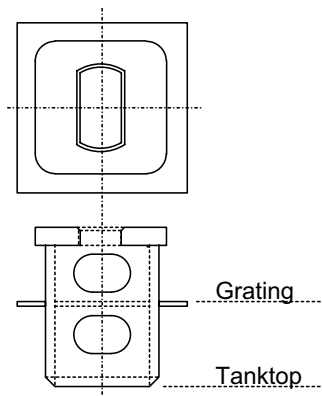
**YOU NAME IT - WE LASH IT**

Filipstadveien 5, N-0250 OSLO, Norway Phone: + 47 - 23 23 96 00 Telefax: + 47 - 23 23 96 01 E-mail: post@seasafe.no

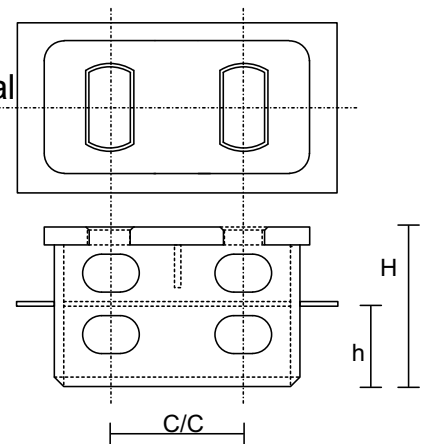
# Raised ISO reefer foundations

## A 8

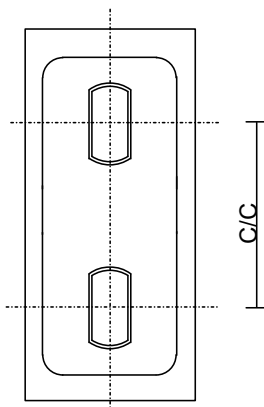
**A 8.1**  
Single



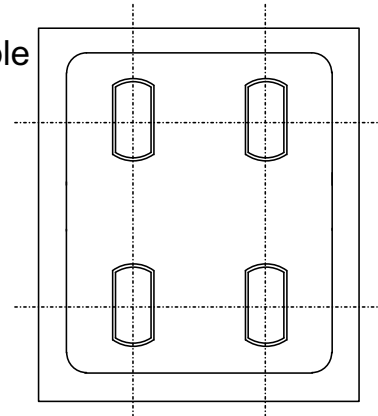
**A 8.2**  
Double  
transversal



**A 8.3**  
Double  
longitudinal



**A 8.4**  
Quadruple



| Type  | Gap<br>mm      | C/C<br>mm          | MBL (kN)<br>tension | H/h<br>(mm)              | Dimensions<br>mm   |
|-------|----------------|--------------------|---------------------|--------------------------|--------------------|
| A 8.1 | ---            | ---                | 500                 | On request               | 180x180            |
| A 8.2 | 25<br>80       | 203<br>258         | 500<br>500          | On request<br>On request | 383x180<br>438x180 |
| A 8.3 | 76             | 279                | 500                 | On request               | 459x180            |
| A 8.4 | 25/76<br>80/76 | 203/279<br>258/279 | 500<br>500          | On request<br>On request | 383x459<br>438x459 |

General specifications:

Material: Shipbuilding steel.  
 Finish: Black or primer.  
 Certificate: Workshop certificate, class certificate upon request.  
 Remark: Other design, dimensions, material and finish upon request.

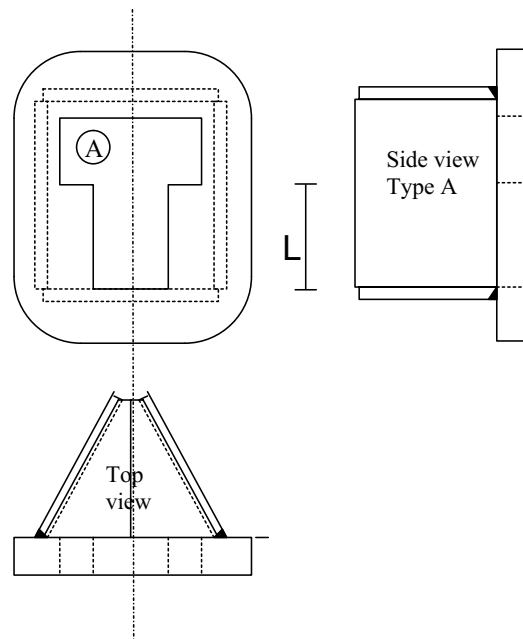
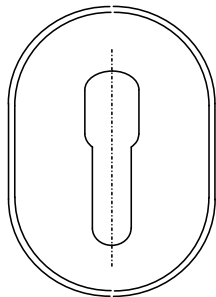


**Seasafe Transport A/S**

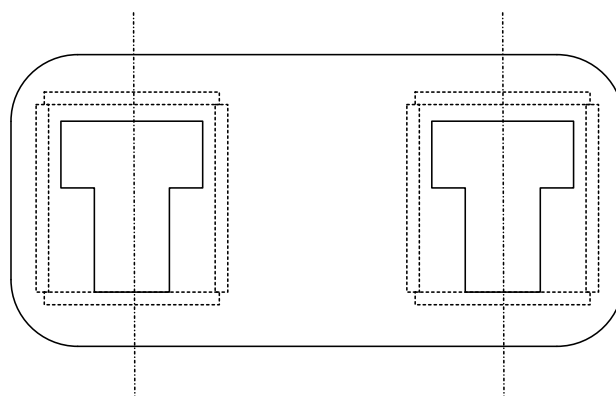
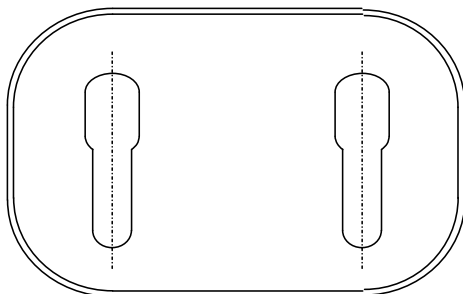
**YOU NAME IT - WE LASH IT**

Filipstadveien 5, N-0250 OSLO, Norway Phone: + 47 - 23 23 96 00 Telefax: + 47 - 23 23 96 01 E-mail: post@seasafe.no

## A 9.1 Single



## A 9.2 Double



### Flush keyhole foundations

Flush keyhole foundations are supplied in accordance with customer specific requirements.

Although a general standard is available, the project specific details are significantly affecting the general design to such an extent that it is not appropriate to include further details in this catalogue.

Detail drawings available upon request.

### General specifications:

|              |   |
|--------------|---|
| Material:    | Shipbuilding steel.   |
| Finnish:     | Black or primer.  |
| Certificate: | Workshop certificate, class certificate upon request.       |
| Remark:      | Other design, dimensions, material and finish upon request. |



**Seasafe Transport A/S**

**YOU NAME IT - WE LASH IT**

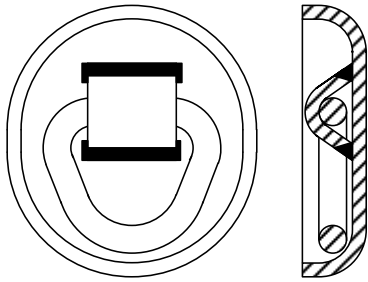
Filipstadveien 5, N-0250 OSLO, Norway Phone: + 47 - 23 23 96 00 Telefax: + 47 - 23 23 96 01 E-mail: post@seasafe.no



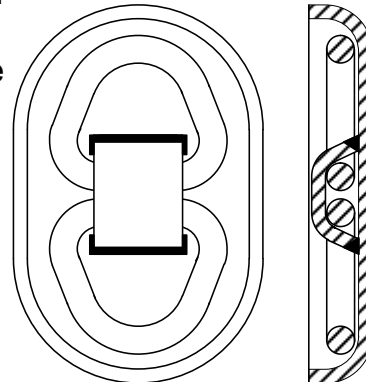
# Flush lashing points

A 10 - A 11

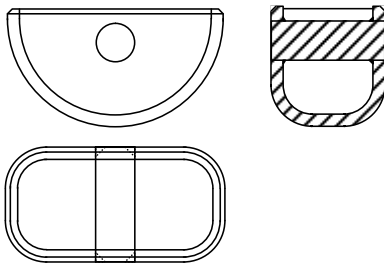
**A 10.1**  
D-ring  
single



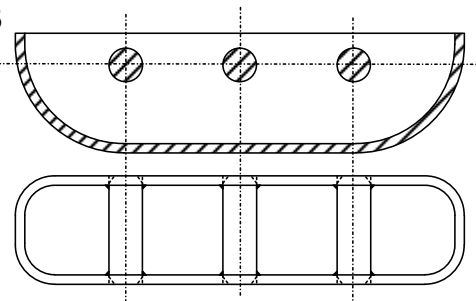
**A 10.2**  
D-ring  
double



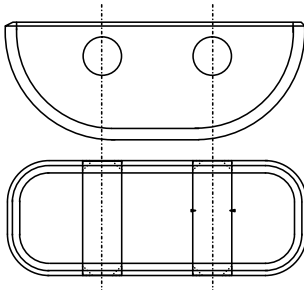
**A 11.1**  
Flush  
pin  
single



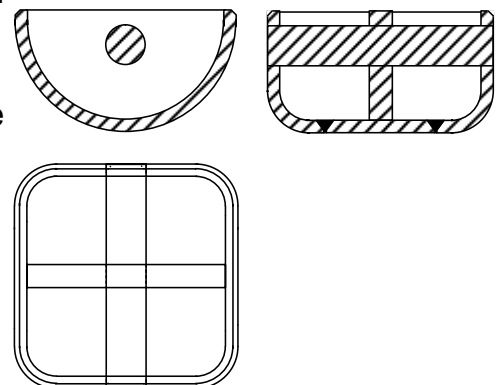
**A 11.3**  
Flush  
pin  
triple



**A 11.2**  
Flush  
pin  
double



**A 11.4**  
Flush  
pin  
double



| Type   | MBL (kN)<br>tension | Type   | MBL (kN)<br>tension |
|--------|---------------------|--------|---------------------|
| A 10.1 | 60 - 500            | A 11.1 | 200 - 500           |
| A 10.2 | 60 - 500            | A 11.2 | 200 - 500           |
|        |                     | A 11.3 | 200 - 500           |
|        |                     | A 11.4 | 200 - 500           |

**General specifications:**

- Material: Shipbuilding steel / chain steel.
- Finnish: Black or primer.
- Certificate: Workshop certificate, class certificate upon request.
- Remark: Other design, dimensions, material and finish upon request.



**Seasafe Transport A/S**

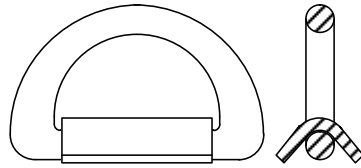
**YOU NAME IT - WE LASH IT**

Filipstadveien 5, N-0250 OSLO, Norway Phone: + 47 - 23 23 96 00 Telefax: + 47 - 23 23 96 01 E-mail: post@seasafe.no

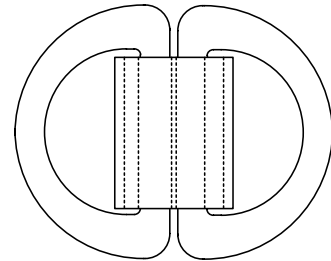
# Non flush lashing point

## A 12 - A 13

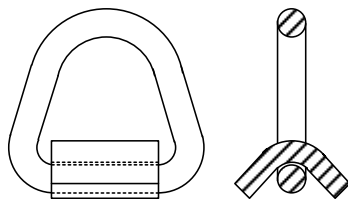
**A 12.1**  
D-ring  
single



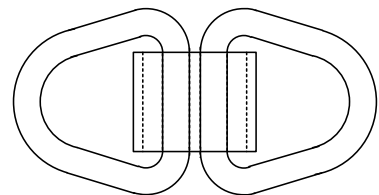
**A 12.2**  
D-ring  
double



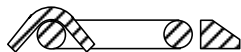
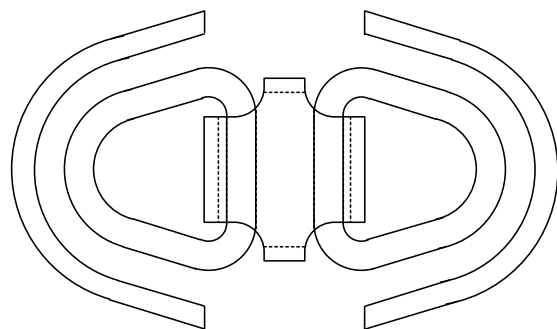
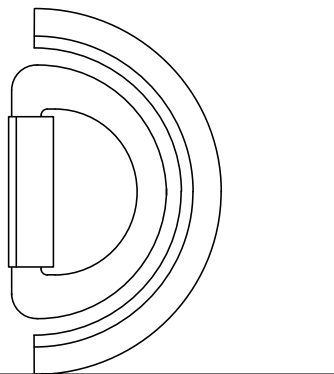
**A 13.1**  
D-ring  
single



**A 13.2**  
D-ring  
double



D-ring  
with  
protection  
ring



| Type   | MBL (kN)<br>tension | Type   | MBL (kN)<br>tension |
|--------|---------------------|--------|---------------------|
| A 12.1 | 60 - 600            | A 13.1 | 60 - 600            |
| A 12.2 | 60 - 600            | A 13.2 | 60 - 600            |

A 12 design is based on a perfect D-shape ring, whilst the A 13 design is more triangular.

Detail drawings available upon request.

### General specifications:

|              |   |
|--------------|---|
| Material:    | Shipbuilding steel, forged/chain steel.                     |
| Finnish:     | Black or primer.  |
| Certificate: | Workshop certificate, class certificate upon request.       |
| Remark:      | Other design, dimensions, material and finish upon request. |

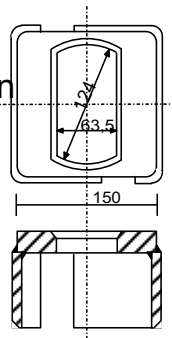


**Seasafe Transport A/S**

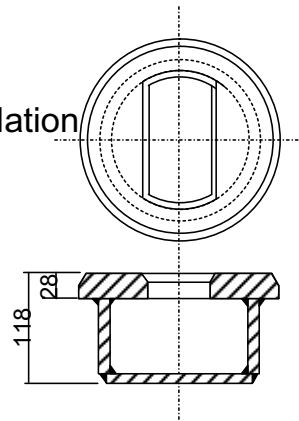
**YOU NAME IT - WE LASH IT**

Filipstadveien 5, N-0250 OSLO, Norway Phone: + 47 - 23 23 96 00 Telefax: + 47 - 23 23 96 01 E-mail: post@seasafe.no

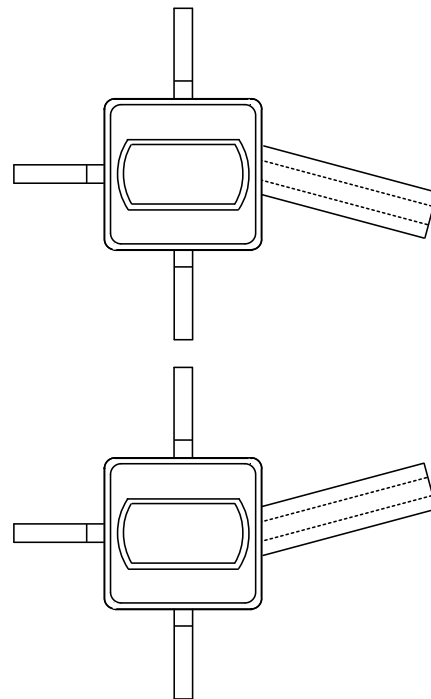
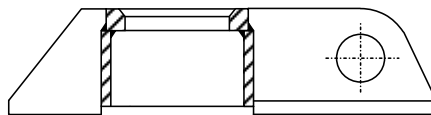
**A 14.1**  
Raised ISO  
lifting foundation



**A 14.2**  
Flush ISO  
lifting foundation



**A 14.3**  
Raised ISO  
lifting foundation  
with crawfoot



### Lifting ISO foundations

Lifting ISO foundations are supplied in accordance with customer specific requirements.

Although a general standard is available, the project specific details are significantly affecting the general design to such an extent that it is not appropriate to include further details in this catalogue.

Detail drawings available upon request.

### General specifications:

- |              |   |
|--------------|---|
| Material:    | Shipbuilding steel.   |
| Finnish:     | Black or primer.  |
| Certificate: | Workshop certificate, class certificate upon request.       |
| Remark:      | Other design, dimensions, material and finish upon request. |



**Seasafe Transport A/S**

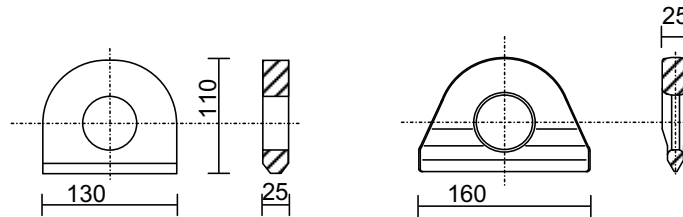
Filipstadveien 5, N-0250 OSLO, Norway Phone: + 47 - 23 23 96 00 Telefax: + 47 - 23 23 96 01 E-mail: post@seasafe.no

**YOU NAME IT - WE LASH IT**

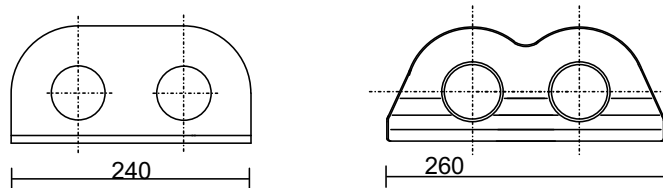
# Fixed lashing plates

# A 15

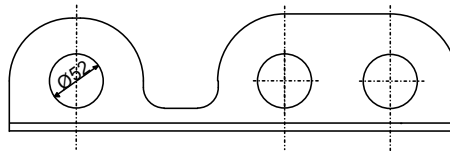
**A 15.1**  
Single



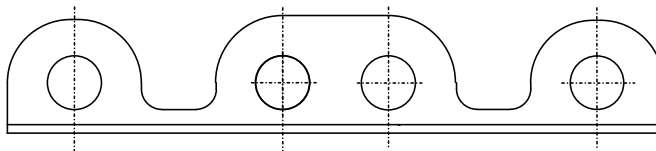
**A 15.2**  
Double



**A 15.3**  
Triple



**A 15.4**  
Quadruple



| Type   | MBL (kN) tension | Weight (kg) |
|--------|------------------|-------------|
| A 15.1 | 500              | 2           |
| A 15.2 | 500              | 4           |
| A 15.3 | 500              | 6,3         |
| A 15.4 | 500              | 8,6         |

**General specifications:**

|              |   |
|--------------|---|
| Material:    | Shipbuilding steel / forged steel.                          |
| Finnish:     | Black or primer.  |
| Certificate: | Workshop certificate, class certificate upon request.       |
| Remark:      | Other design, dimensions, material and finish upon request. |



**Seasafe Transport A/S**

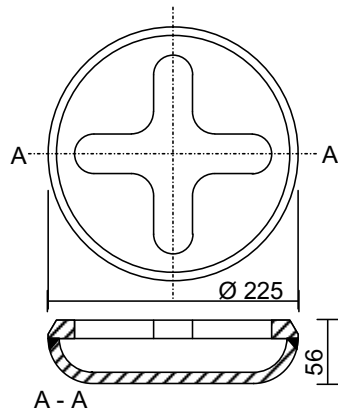
**YOU NAME IT - WE LASH IT**

Filipstadveien 5, N-0250 OSLO, Norway Phone: + 47 - 23 23 96 00 Telefax: + 47 - 23 23 96 01 E-mail: post@seasafe.no

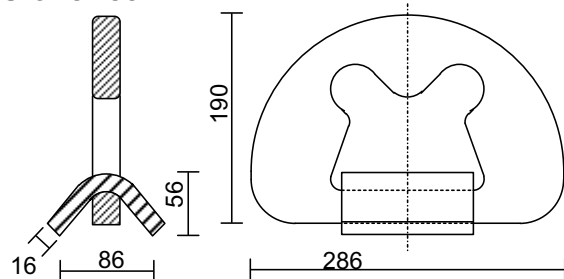
# Elephant foot foundations

## A16 - A19

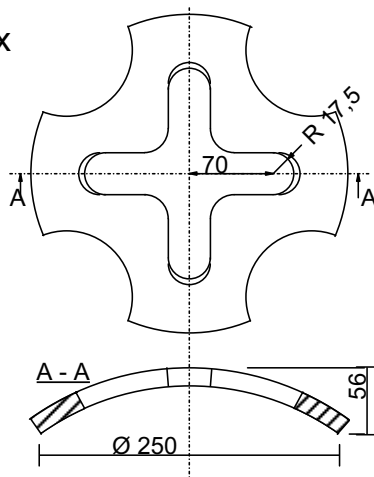
**A 16**  
Flush



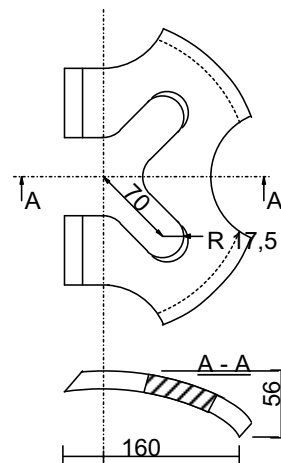
**A 17**  
Cloverleaf



**A 18**  
Convex



**A 19**  
Half convex



| Type | MBL (kN) tension | Weight (kg) | Dimensions mm   |
|------|------------------|-------------|-----------------|
| A 16 | 240 / 320        | 7,5 / 8,5   | Ø225x56 / 60    |
| A 17 | 240              | 8           | ---             |
| A 18 | 240 / 320        | 3,5 / 4,2   | Ø250x56 / 60    |
| A 19 | 240 / 320        | 2,5 / 3     | 250x160x56 / 60 |

General specifications:

- Material: Shipbuilding steel.
- Finish: Black or primer.
- Certificate: Workshop certificate, class certificate upon request.
- Remark: Other design, dimensions, material and finish upon request.



**Seasafe Transport A/S**

**YOU NAME IT - WE LASH IT**

Filipstadveien 5, N-0250 OSLO, Norway Phone: + 47 23 23 96 00 Telefax: + 47 - 23 23 96 01 E-mail: post@seasafe.no

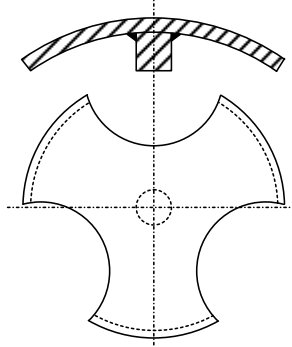


# Fixed car lashing points

A 20 - A 25

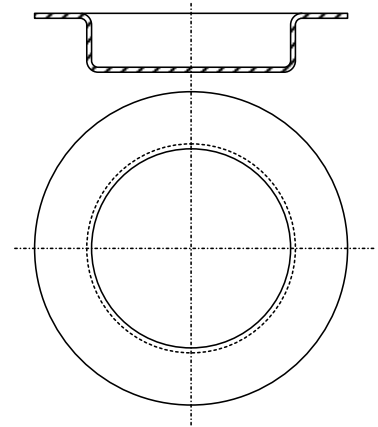
## A 20

Baby elephant foot



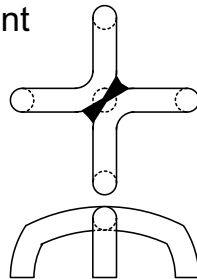
## A 23

Car lashing pot thermoplast



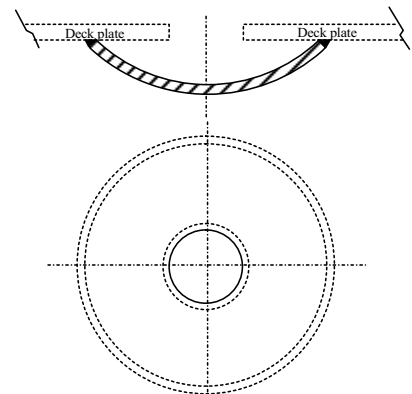
## A 21

Car lashing point



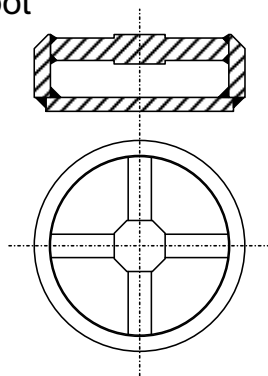
## A 24

Flush car lashing pot



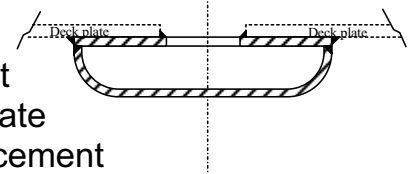
## A 22

Flush cross-pin car lashing pot



## A 25

Flush car lashing pot with top plate for reinforcement



| Type | MBL (kN) tension | Weight (kg) | Dimensions (mm) |
|------|------------------|-------------|-----------------|
| A 20 | 100              | 0,8         | Ø205x90         |
| A 21 | 40               | 0,2         | ----            |
| A 22 | 60               | 1,5         | ----            |
| A 23 | ----             | 0,2         | ----            |
| A 24 | ----             | 0,8         | ----            |
| A 25 | ----             | 1,6         | ----            |

### General specifications:

Material: Shipbuilding steel / plastic  
 Finish: Black or primer / untreated  
 Certificate: Workshop certificate, class certificate upon request.  
 Remark: Other design, dimensions, material and finish upon request.



**Seasafe Transport A/S**

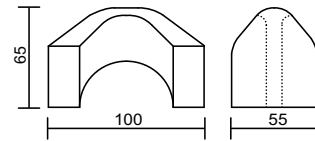
**YOU NAME IT - WE LASH IT**

Filipstadveien 5, N-0250 OSLO, Norway Phone: + 47 - 23 23 96 00 Telefax: + 47 - 23 23 96 01 E-mail: post@seasafe.no

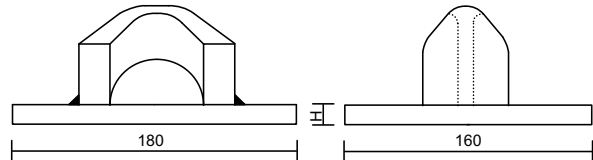
# Welding cones / Guide fittings

## A 26 - A 30

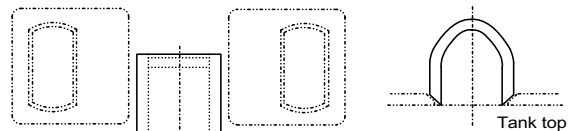
**A 26**  
Welding cone



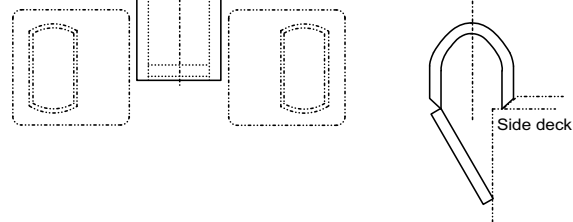
**A 27**  
Welding cone with plate



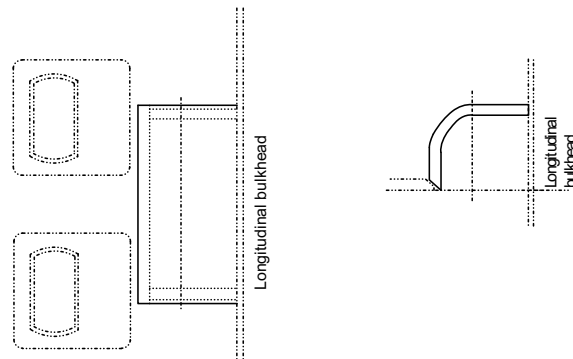
**A 28**  
Guidefitting for tanktop between containers



**A 29**  
Guidefitting for sidedecks between containers



**A 30**  
Guidefitting for tanktop between bulkhead / container



| Type | MBL (kN) shear | Weight (kg) | Dimensions mm |
|------|----------------|-------------|---------------|
| A 26 | 500            | 1,0         | Ø100x55x85    |
| A 27 | 500            | 3,0         | 180x160x95    |
| A 28 | 620            | 19,0        | 400x115x230   |
| A 29 | 620            | 27,0        | 400x115x400   |
| A 30 | 620            | 10,0        | 400x50x230    |

### General specifications:

**Material:** Shipbuilding steel

**Finish:** Black or primer

**Certificate:** Workshop certificate, class certificate upon request.

**Remark:** Other design, dimensions, material and finish upon request.



**Seasafe Transport A/S**

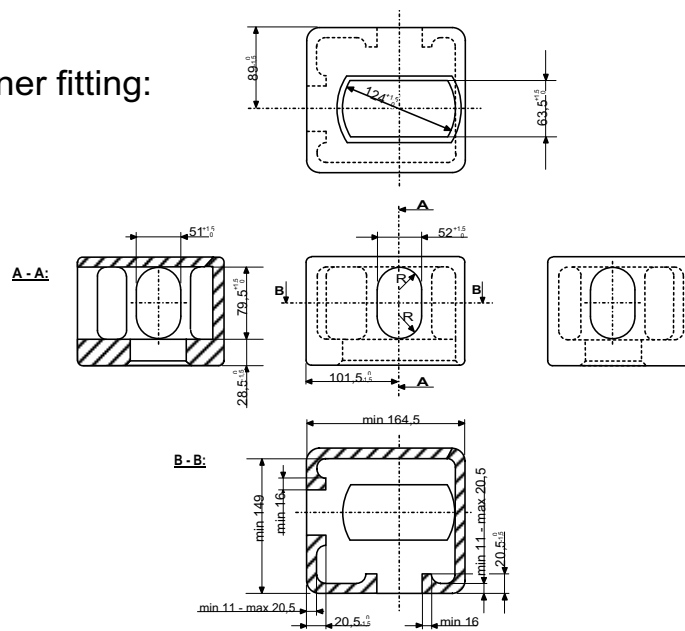
**YOU NAME IT - WE LASH IT**

Filipstadveien 5, N-0250 OSLO, Norway Phone: + 47 - 23 23 96 00 Telefax: + 47 - 23 23 96 01 E-mail: post@seasafe.no

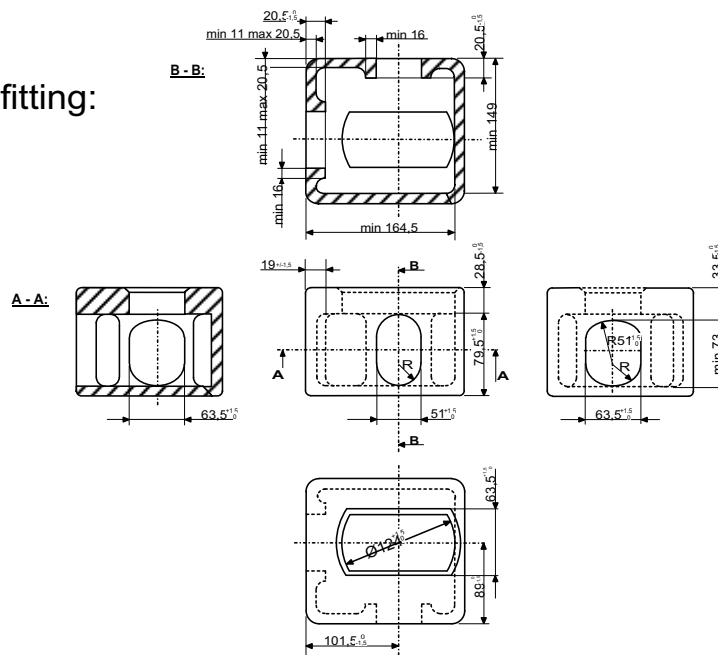
# ISO container corner fittings

# A 31 - A 32

## A31 Bottom corner fitting:



## A32 Top corner fitting:



### Standard cast steel type (ISO1161):

| Type   | MBL (kN)<br>tension | Weight<br>(kg) | Dimensions<br>mm |
|--------|---------------------|----------------|------------------|
| A 31 L | ----                | 10,9           | 178x162x118      |
| A 31 R | ----                | 10,9           | 178x162x118      |
| A 32 L | ----                | 10,6           | 178x162x118      |
| A 32 R | ----                | 10,6           | 178x162x118      |

### Aluminium type (ISO R1161):

| Type   | MBL (kN)<br>tension | Weight<br>(kg) | Dimensions<br>mm |
|--------|---------------------|----------------|------------------|
| A 31 L | ----                | 4,5            | 180x162x121      |
| A 31 R | ----                | 4,5            | 180x162x121      |
| A 32 L | ----                | 4,5            | 180x162x121      |
| A 32 R | ----                | 4,5            | 180x162x121      |



**Seasafe Transport A/S**

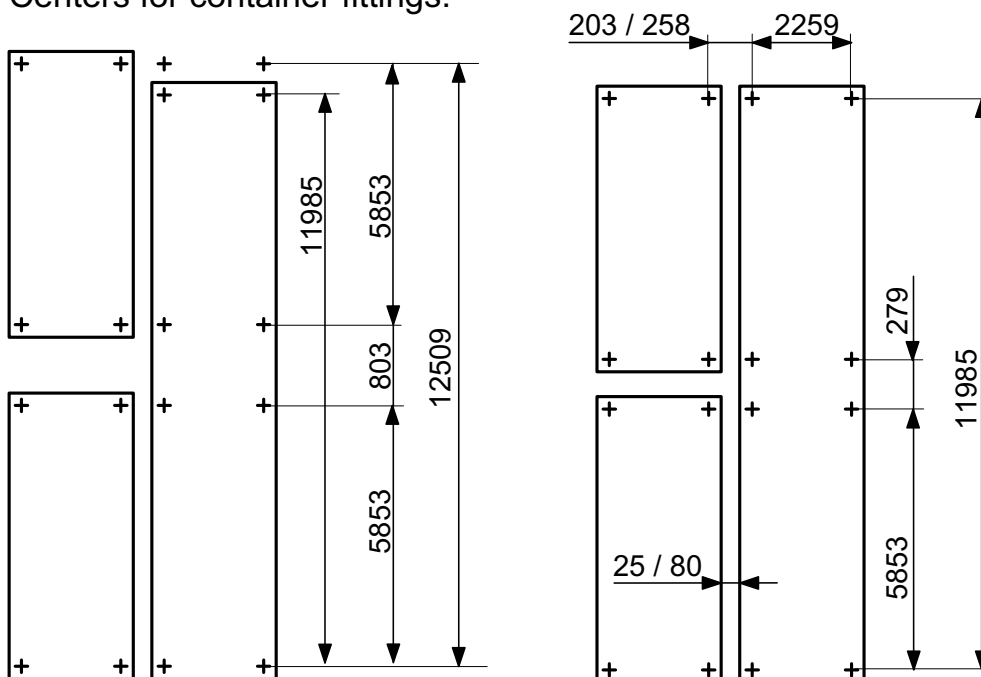
**YOU NAME IT - WE LASH IT**

Filipstadveien 5, N-0250 OSLO, Norway Phone: + 47 - 23 23 96 00 Telefax: + 47 - 23 23 96 01 E-mail: post@seasafe.no

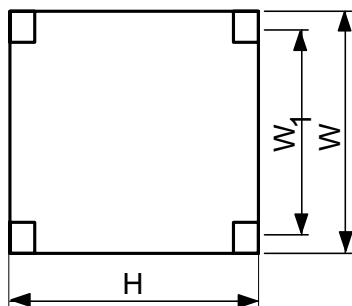
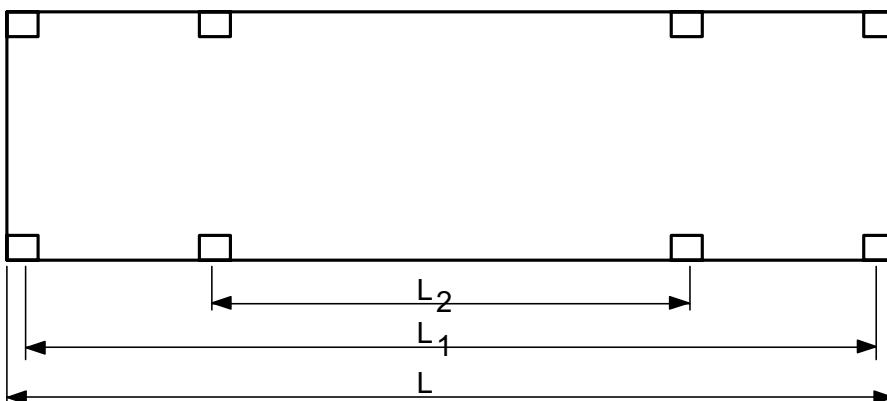
# Container specifications



## Centers for container fittings:



## Container layout:



**Seasafe Transport A/S**

**YOU NAME IT - WE LASH IT**

Filipstadveien 5, N-0250 OSLO, Norway Phone: + 47 - 23 23 96 00 Telefax: + 47 - 23 23 96 01 E-mail: post@seasafe.no

# Container specifications



## Dimensions for various standard containers:

| CONTAINER           | L<br>(M) | L <sub>1</sub><br>(M) | L <sub>2</sub><br>(M) | W<br>(M) | W <sub>1</sub><br>(M) | H <sub>2</sub><br>(M) | GROSS WT.<br>(KG) |
|---------------------|----------|-----------------------|-----------------------|----------|-----------------------|-----------------------|-------------------|
| 10 FT ID ISO        | 2,991    | 2,787                 | -                     | 2,438    | 2,259                 | 2,438                 | 10,160            |
| 20 FT IC ISO        | 6,058    | 5,853                 | -                     | 2,438    | 2,259                 | 2,438                 | 24,000            |
| 20 FT ICC ISO       | 6,058    | 5,853                 | -                     | 2,438    | 2,259                 | 2,591                 | 24,000            |
| 20 FT ICC ISO       | 6,058    | 5,853                 | -                     | 2,438    | 2,259                 | 2,896                 | 24,000            |
| 24 FT 2CC ISO       | 7,430    | 7,225                 | 5,853                 | 2,595    | 2,259                 | 2,591                 | 30,480            |
| 24 FT 2CCC ISO      | 7,430    | 7,225                 | 5,853                 | 2,595    | 2,259                 | 2,896                 | 30,480            |
| 30 FT IB ISO        | 9,125    | 8,918                 | -                     | 2,438    | 2,259                 | 2,438                 | 25,400            |
| 30 FT IBB ISO       | 9,125    | 8,918                 | -                     | 2,438    | 2,259                 | 2,591                 | 25,400            |
| 40 FT IA ISO        | 12,192   | 11,985                | -                     | 2,438    | 2,259                 | 2,438                 | 30,480            |
| 40 FT IAA ISO       | 12,192   | 11,985                | -                     | 2,438    | 2,259                 | 2,591                 | 30,480            |
| 40 FT IAAA ISO      | 12,192   | 11,985                | -                     | 2,438    | 2,259                 | 2,896                 | 30,480            |
| 45 FT 2AA ISO       | 13,716   | 13,509                | 11,985                | 2,438    | 2,259                 | 2,591                 | 30,480            |
| 45 FT 2AAA ISO      | 13,716   | 13,509                | 11,985                | 2,438    | 2,259                 | 2,896                 | 30,480            |
| 49 FT 2AA ISO       | 14,953   | 14,728                | 11,985                | 2,595    | 2,259                 | 2,591                 | 30,480            |
| 49 FT 2AAA ISO      | 14,953   | 14,728                | 11,985                | 2,595    | 2,259                 | 2,896                 | 30,480            |
| 24 FT MATSON        | 7,315    | 7,108                 | -                     | 2,438    | 2,259                 | 2,896                 | 24,950            |
| 35 FT SEALAND       | 10,668   | 10,553                | -                     | 2,438    | 2,134                 | 2,603                 | 27,443            |
| 43 FT SPECIAL       | 13,106   | 12,899                | -                     | 2,438    | 2,259                 | 2,591                 | 30,480            |
| 45 FT U.S. STANDARD | 13,716   | 13,509                | 11,985                | 2,600    | 2,259                 | 2,900                 | 30,480            |
| 48 FT U.S. STANDARD | 14,603   | 14,423                | 11,985                | 2,600    | 2,259                 | 2,900                 | 30,480            |
| 53 FT U.S. STANDARD | 16,154   | 16,147                | 11,985                | 2,600    | 2,259                 | 2,900                 | 30,480            |

## Tolerances:

|           |            |
|-----------|------------|
| L > 24 FT | +0, -10 MM |
| L ≤ 24 FT | +0, -6 MM  |
| H         | +0, -5 MM  |
| W         | +0, -5 MM  |



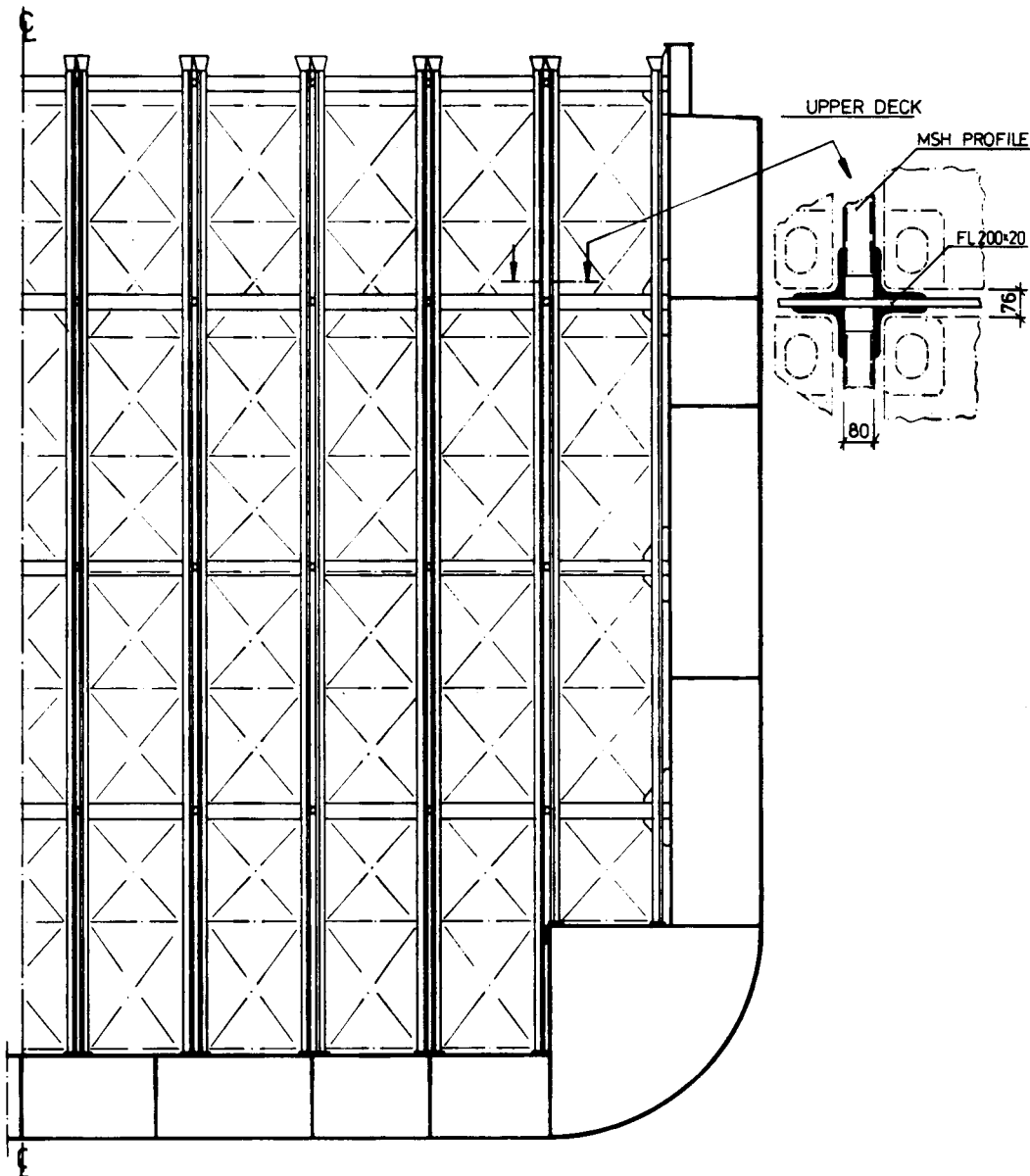
**Seasafe Transport A/S**

**YOU NAME IT - WE LASH IT**

Filipstadveien 5, N-0250 OSLO, Norway Phone: + 47 - 23 23 96 00 Telefax: + 47 - 23 23 96 01 E-mail: post@seasafe.no



# Cell Guide Systems



## Seasafe delivers fixed and movable cell guide systems for decks and holds:

Due to its space-saving kind of construction, it is possible to arrange a cell guide system in a 76 mm cross section. Therewith it is possible to arrange cell guides for 2 x 20 feet containers in a 40 feet slot area.

Lashing elements such as stacking cones, pressure adapters, bridge fittings and side supports need not be used anymore. This movable system is fixed with a few solid connections. Dismantling can be effected quickly in case 40 feet containers are to be carried.

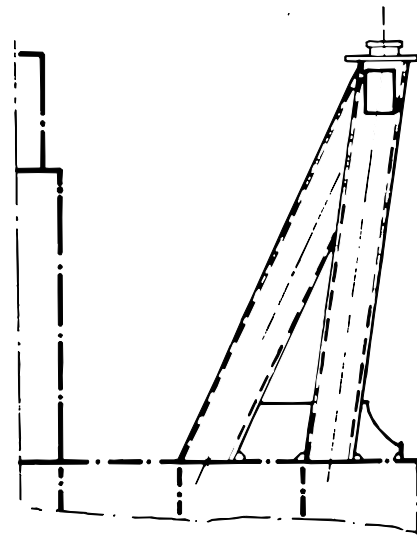
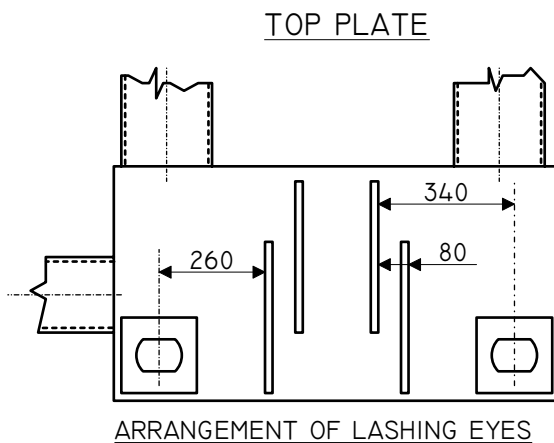
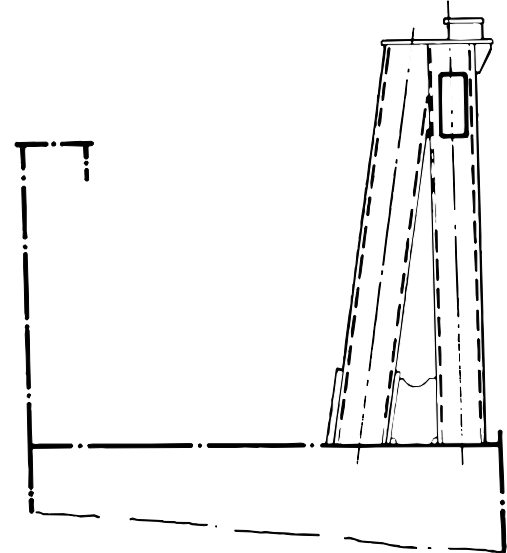
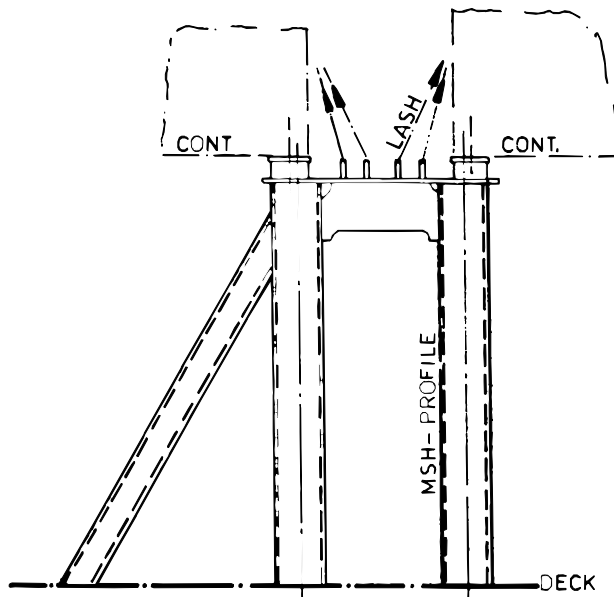


**Seasafe Transport A/S**

**YOU NAME IT - WE LASH IT**

Filipstadveien 5, N-0250 OSLO, Norway Phone: + 47 - 23 23 96 00 Telefax: + 47 - 23 23 96 01 E-mail: post@seasafe.no

# Container Support Arrangement



## Seasafe delivers and arranges installation of container supports

Seasafe delivers container supports of various types for installation on deck or in holds, eg. for the purpose of increasing the ship's current container capacity.

Seasafe can also plan and arrange for the installation of the delivered supports, together with necessary foundations, container sockets, lashing eyes, etc.



**Seasafe Transport A/S**

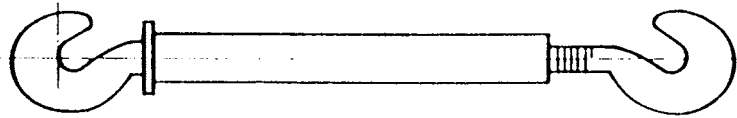
**YOU NAME IT - WE LASH IT**

Filipstadveien 5, N-0250 OSLO, Norway Phone: + 47 - 23 23 96 00 Telefax: + 47 - 23 23 96 01 E-mail: post@seasafe.no

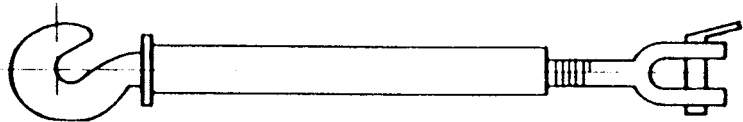
# Turnbuckles, closed type

B 1 - B 5

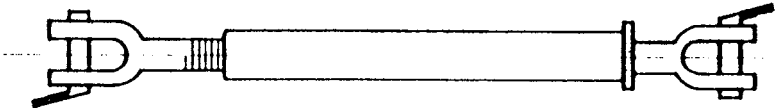
**B 1**  
Hook - hook



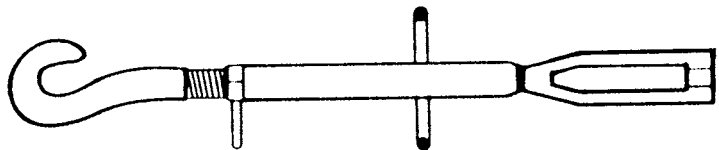
**B 2**  
Hook - jaw



**B 3**  
Jaw - jaw



**B 4**  
Hook - spacer



**B 5**  
Handwheel



| Type | MBL (kN)<br>tension | Weight<br>(kg) | Dimensions<br>min-max (mm) |
|------|---------------------|----------------|----------------------------|
| B 1  | 360/500             | 18,0           | 950-1350                   |
| B 2  | 360/500             | 18,0           | 950-1350                   |
| B 3  | 360/500             | 18,0           | 950-1350                   |
| B 4  | 360                 | 16,0           | 950-1350                   |
| B 5  | ---                 | 1,8            | ---                        |

General specifications:

Material: Shipbuilding steel / forged steel

Finish: Galvanized

Certificate: Workshop certificate, class certificate upon request.

Remark: Other design, dimensions, material and finish upon request.



**Seasafe Transport A/S**

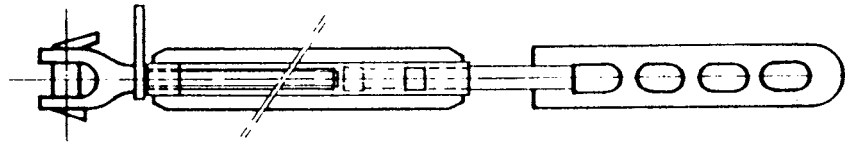
**YOU NAME IT - WE LASH IT**

Filipstadveien 5, N-0250 OSLO, Norway Phone: + 47 - 23 23 96 00 Telefax: + 47 - 23 23 96 01 E-mail: post@seasafe.no

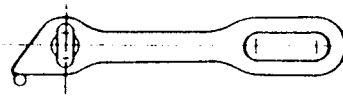
# Turnbuckles, open type

B 6 - B 8

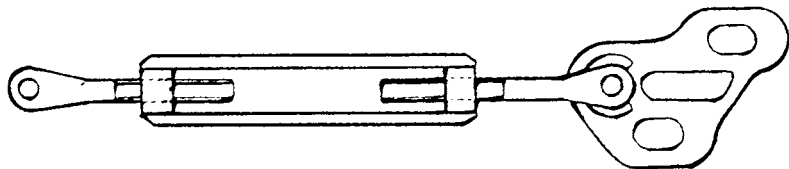
**B 6**  
Jaw - plate



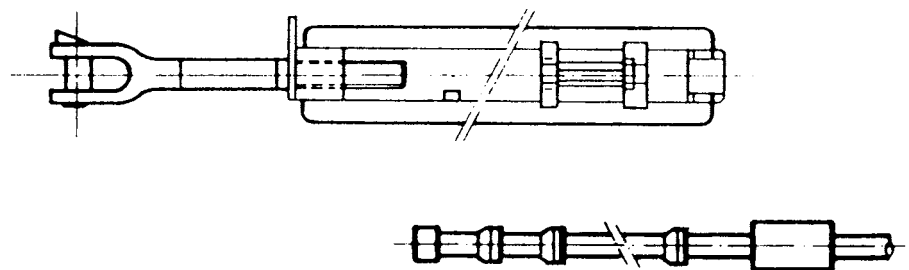
**B 6.1**  
Extension rod  
for B 6



**B 7**  
Jaw - whip plate



**B 8**  
Jaw - skid guide



| Type  | MBL (kN)<br>tension | Weight<br>(kg) | Dimensions<br>min-max (mm) |
|-------|---------------------|----------------|----------------------------|
| B 6   | 360/500             | 18,0           | 950-1350                   |
| B 6.1 | 360/500             | 6,0            | ----                       |
| B 7   | 500                 | 23,0           | 1200-1800                  |
| B 8   | 500                 | 13,0           | 1160-1515                  |

General specifications:

Material: Forged steel / high tensile steel

Finish: Galvanized

Certificate: Workshop certificate, class certificate upon request.

Remark: Other design, dimensions, material and finish upon request.



**Seasafe Transport A/S**

**YOU NAME IT - WE LASH IT**

Filipstadveien 5, N-0250 OSLO, Norway Phone: + 47 - 23 23 96 00 Telefax: + 47 - 23 23 96 01 E-mail: post@seasafe.no

# Lashing rods

B 9 - B 13

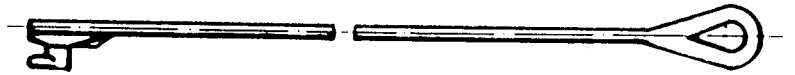
**B 9**  
Eye - eye



**B 10**  
Hook - eye



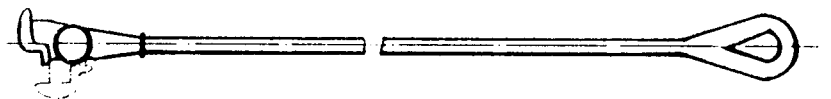
**B 11**  
Plughook - eye



**B 12**  
Plughook - hook



**B 13**  
Swivelhead - eye



| Type | MBL (kN)<br>tension | Weight<br>(kg)             | Length<br>(mm) |
|------|---------------------|----------------------------|----------------|
| B 9  | 360/500             | 2,5 + 3,6 x L <sub>m</sub> | upon request   |
| B 10 | 360/500             | 3,1 + 3,6 x L <sub>m</sub> | upon request   |
| B 11 | 360/500             | 2,6 + 3,6 x L <sub>m</sub> | upon request   |
| B 12 | 360/500             | 2,9 + 3,6 x L <sub>m</sub> | upon request   |
| B 13 | 360/500             | 2,4 + 3,6 x L <sub>m</sub> | upon request   |

General specifications:

Material: Forged steel / high tensile steel

Finish: Galvanized

Certificate: Workshop certificate, class certificate upon request.

Remark: Other design, dimensions, material and finish upon request.



**Seasafe Transport A/S**

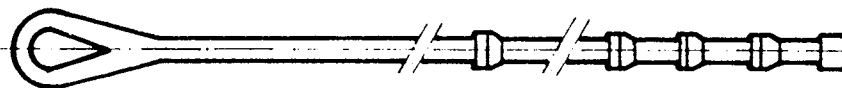
**YOU NAME IT - WE LASH IT**

Filipstadveien 5, N-0250 OSLO, Norway Phone: + 47 - 23 23 96 00 Telefax: + 47 - 23 23 96 01 E-mail: post@seasafe.no

# Lashing rods & wires with steps

B 14 - B 19

**B 14**  
Eye - steps



**B 15**  
Hook - steps



**B 16**  
Plug hook - steps



**B 17**  
Swivel head - steps



**B 18**  
Eye - steps



**B 19**  
Eye - talurit



| Type | MBL (kN)<br>tension | Weight<br>(kg)             | Length<br>(mm) |
|------|---------------------|----------------------------|----------------|
| B 14 | 500                 | 2,9 + 3,6 x L <sub>m</sub> | upon request   |
| B 15 | 500                 | 3,4 + 3,6 x L <sub>m</sub> | upon request   |
| B 16 | 500                 | 3,0 + 3,6 x L <sub>m</sub> | upon request   |
| B 17 | 500                 | 2,9 + 3,6 x L <sub>m</sub> | upon request   |
| B 18 | 210/460             |                            | upon request   |
| B 19 | 210/460             |                            | upon request   |

General specifications:

Material: Forged steel / high tensile steel  
 Finish: Galvanized  
 Certificate: Workshop certificate, class certificate upon request.  
 Remark: Other design, dimensions, material and finish upon request.



**Seasafe Transport A/S**

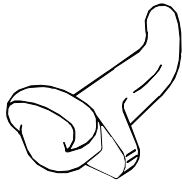
**YOU NAME IT - WE LASH IT**

Filipstadveien 5, N-0250 OSLO, Norway Phone: + 47 - 23 23 96 00 Telefax: + 47 - 23 23 96 01 E-mail: post@seasafe.no

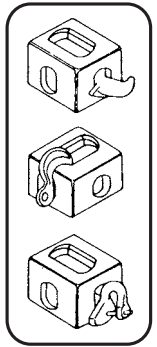
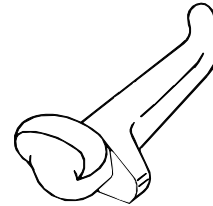
# Securing pads & hooks

B 20 - B 25

**B 20.1**  
Penguin hook  
short



**B 20.2**  
Penguin hook  
long



**B 21.1**  
Hook  
short tip



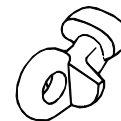
**B 21.2**  
Hook  
long tip



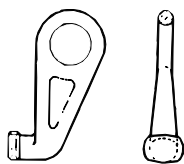
**B 22**  
Eye hook  
with locking pin



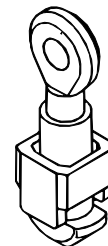
**B 23**  
Eye hook



**B 24**  
Container lifting  
hook



**B 25**  
Container lifting  
hook



| Type   | MBL (kN) | Weight (kg) | Type | MBL (kN) | Weight (kg) |
|--------|----------|-------------|------|----------|-------------|
| B 20.1 | 360      | 2,5         | B 22 | 200      | 2,5         |
| B 20.2 | 360      | 3,0         | B 23 | 200      | 2,5         |
| B 21.1 | 200      | 1,3         | B 24 | 500      | 4,0         |
| B 21.2 | 200      | 1,5         | B 25 | 450      | 6,0         |

General specifications:

- Material: Forged steel
- Finish: Galvanized / painted
- Certificate: Workshop certificate, class certificate upon request.
- Remark: Other design, dimensions, material and finish upon request.



**Seasafe Transport A/S**

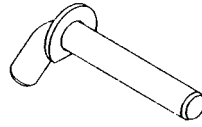
**YOU NAME IT - WE LASH IT**

Filipstadveien 5, N-0250 OSLO, Norway Phone: + 47 - 23 23 96 00 Telefax: + 47 - 23 23 96 01 E-mail: post@seasafe.no

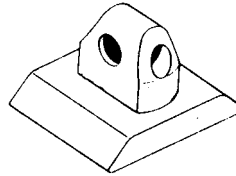
# Stacking cones & locking pins

B 26 - B 29

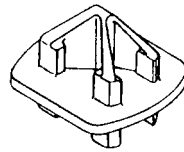
**B 26**  
Locking pin



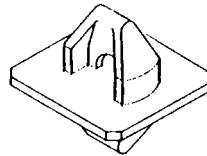
**B 27**  
Dovetail stacking cone



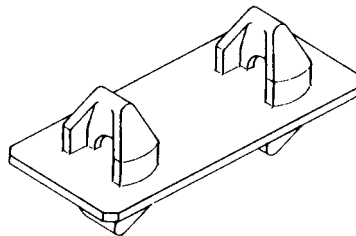
**B 28**  
Bottom stacking cone



**B 29.1**  
Stacking cone  
intermediate, single



**B 29.2**  
Stacking cone  
intermediate  
double transversal



| Type   | Gap mm | C/C mm | MBL (kN) shear | Weight (kg) | Dimensions (mm) |
|--------|--------|--------|----------------|-------------|-----------------|
| B 26   | ----   | ----   | 0,8            | 1,8         | Ø28             |
| B 27   | ----   | ----   | 0,2            | 3,5         | 176x140 H32     |
| B 28   | ----   | ----   | 1,5            | 3,0         | 160x120x10      |
| B 29.1 | ----   | ----   | 0,2            | 3,0         | 120x130x10      |
| B 29.2 | 25     | 203    | 0,8            | 8,0         | 150x345x10      |
|        | 80     | 258    | 1,6            | 8,3         | 150x380x10      |

General specifications:

Material: Shipbuilding steel / forged steel  
 Finish: Galvanized  
 Certificate: Workshop certificate, class certificate upon request.  
 Remark: Other design, dimensions, material and finish upon request.



**Seasafe Transport A/S**

**YOU NAME IT - WE LASH IT**

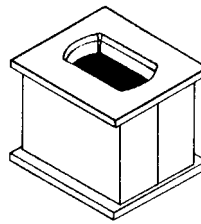
Filipstadveien 5, N-0250 OSLO, Norway Phone: + 47 - 23 23 96 00 Telefax: + 47 - 23 23 96 01 E-mail: post@seasafe.no



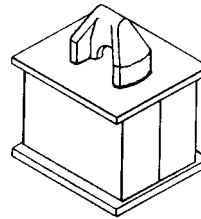
# Compensating spacers

B 30 - B 33

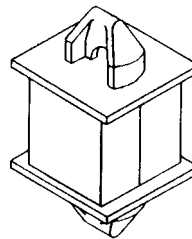
**B 30**  
ISO hole - ISO hole



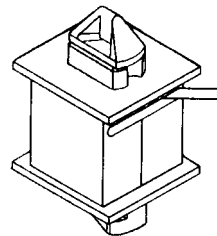
**B 31**  
ISO hole - cone



**B 32**  
Cone - cone



**B 33**  
Fixed base - twistlock



| Type | MBL (kN) compression | Weight (kg) | Dimensions mm |
|------|----------------------|-------------|---------------|
| B 30 | 450                  | 7,0         | 160X150X96    |
| B 31 | 450                  | 8,0         | 160X150X124   |
| B 32 | 450                  | 9,0         | 160X150X152   |
| B 33 | 450                  | 12,0        | 160X150X152   |

General specifications:

Material: Shipbuilding steel / forged steel

Finish: Galvanized / painted

Certificate: Workshop certificate, class certificate upon request.

Remark: Other design, dimensions, material and finish upon request.



**Seasafe Transport A/S**

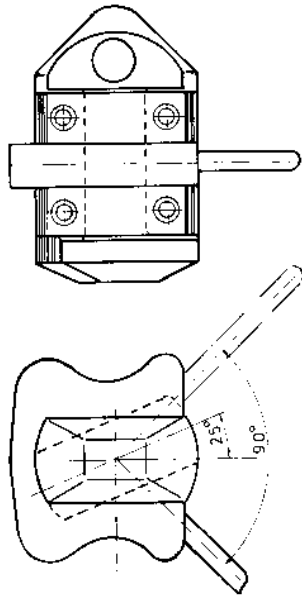
**YOU NAME IT - WE LASH IT**

Filipstadveien 5, N-0250 OSLO, Norway Phone: + 47 - 23 32 96 00 Telefax: + 47 - 23 23 96 01 E-mail: post@seasafe.no

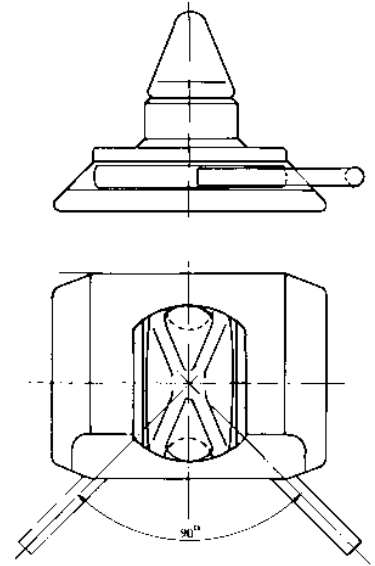
# Twistlocks

B 34 - B 37

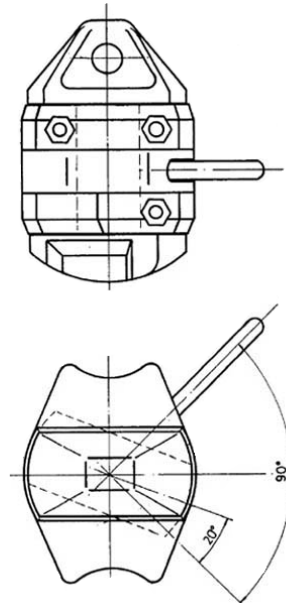
**B 34**  
Double cone  
twistlock



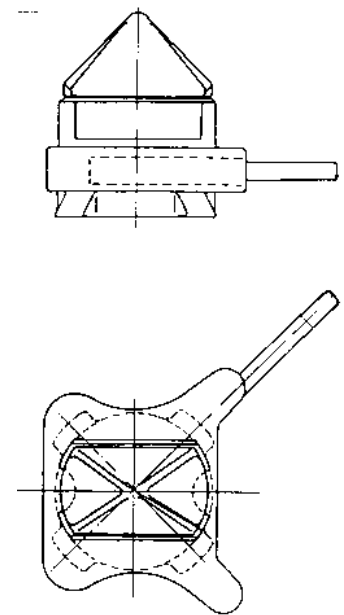
**B 35**  
Dovetail  
twistlock



**B 36**  
Intermediate  
twistlock



**B 37**  
Breech base  
twistlock



| Type | MBL (kN)<br>tension | Weight<br>(kg) | Dimensions<br>mm |
|------|---------------------|----------------|------------------|
| B 34 | 500                 | 6,0            | 115x145x28       |
| B 35 | 360                 | 5,0            | 176x140x32       |
| B 36 | 500                 | 6,5            | 112x140x26       |
| B 37 | 360                 | 6,0            | 160x130x29       |

General specifications:

- Material: Forged steel / cast steel
- Finish: Galvanized
- Certificate: Workshop certificate, class certificate upon request.
- Remark: Other design, dimensions, material and finish upon request.



**Seasafe Transport A/S**

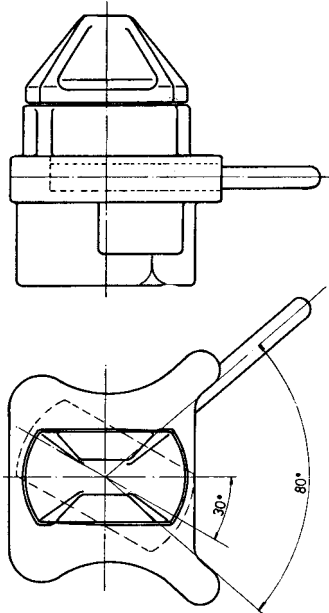
**YOU NAME IT - WE LASH IT**

Filipstadveien 5, N-0250 OSLO, Norway Phone: + 47 - 23 23 96 00 Telefax: + 47 - 23 23 96 01 E-mail: post@seasafe.no

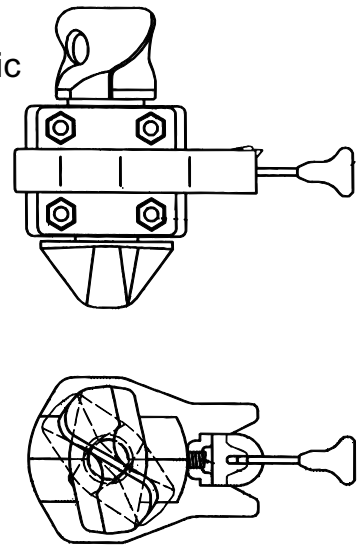
# Twistlocks

B38 - B41

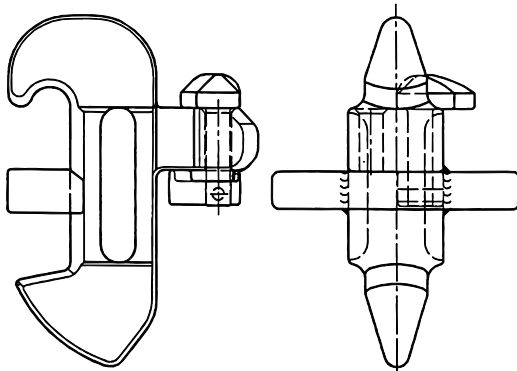
**B 38**  
Fixed base  
twistlock



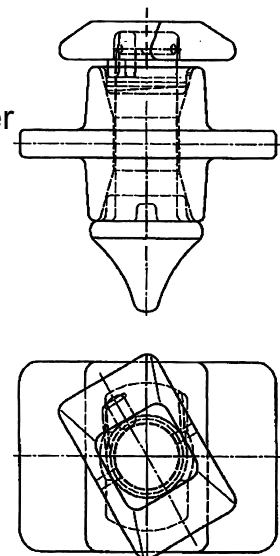
**B 39**  
Semi automatic  
twistlock



**B 40**  
Midlock  
(Osha) stacker



**B 41**  
Self hanging  
(Osha) stacker



| Type | MBL (kN)<br>tension | Weight<br>(kg) | Dimensions<br>mm |
|------|---------------------|----------------|------------------|
| B 38 | 320                 | 6,5            | 160x130x28       |
| B 39 | 500                 | 7,0            | 155x125x28       |
| B 40 | 500                 | 7,0            | 160x160x28       |
| B 41 | 450 (shear)         | 4,0            | 90x125x13        |

General specifications:

Material: Forged steel / cast steel

Finish: Galvanized

Certificate: Workshop certificate, class certificate upon request.

Remark: Other design, dimensions, material and finish upon request.



**Seasafe Transport A/S**

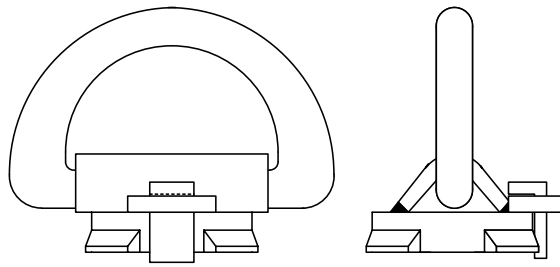
**YOU NAME IT - WE LASH IT**

Filipstadveien 5, N-0250 OSLO, Norway Phone: + 47 - 23 23 96 00 Telefax: + 47 - 23 23 96 01 E-mail: post@seasafe.no

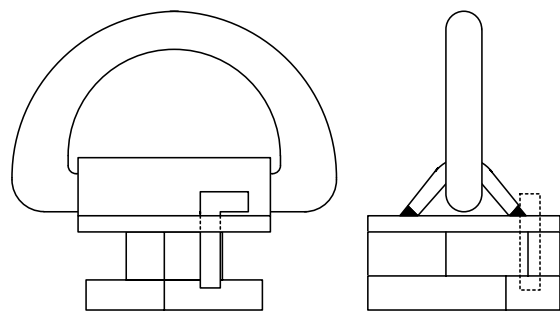
# D-ring foundations

B 42 - B 44

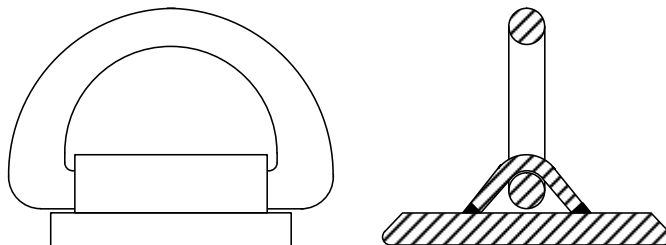
**B 42**  
Breech base  
d-ring foundation



**B 43**  
Fixed base  
d-ring foundation



**B 44**  
Dovetail  
d-ring foundation



| Type | MBL (kN)<br>tension | Weight<br>(kg) | Dimensions<br>mm |
|------|---------------------|----------------|------------------|
| B 42 | 360                 | 4,0            | ----             |
| B 43 | 360                 | 5,0            | ----             |
| B 44 | 360                 | 5,0            | ----             |
|      |                     |                |                  |
|      |                     |                |                  |

General specifications:

- Material: Shipbuilding steel / forged steel
- Finish: Painted
- Certificate: Workshop certificate, class certificate upon request.
- Remark: Other design, dimensions, material and finish upon request.



**Seasafe Transport A/S**

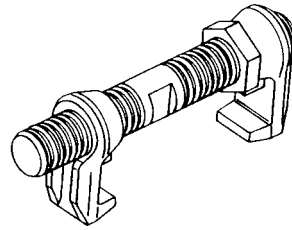
**YOU NAME IT - WE LASH IT**

Filipstadveien 5, N-0250 OSLO, Norway Phone: + 47 - 23 23 96 00 Telefax: + 47 - 23 23 96 01 E-mail: post@seasafe.no

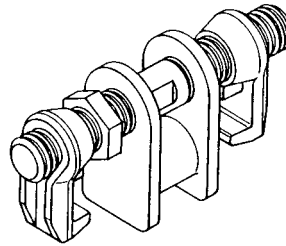
# Screw bridge fittings

B 45 - B 48

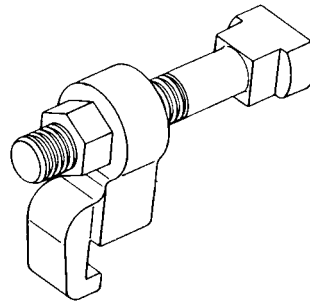
**B 45**  
Single acting  
tension



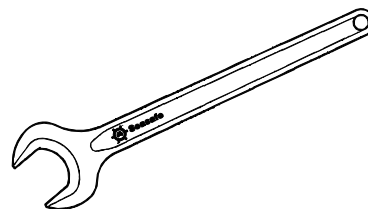
**B 46**  
Double acting  
tension-compression



**B 47**  
Single acting  
for connecting  
8' and 8'6" containers



**B 48**  
Spanner  
for screw bridge fitting  
operation



| Type | Gap<br>mm | C/C<br>mm  | MBL (kN)<br>tension | MBL (kN)<br>compr. | Weight<br>(kg) |
|------|-----------|------------|---------------------|--------------------|----------------|
| B 45 | ---       | ---        | 100                 | ---                | 4,5            |
| B 46 | 25<br>80  | 203<br>258 | 100<br>100          | 200<br>200         | 5,0<br>5,0     |
| B 47 | ---       | ---        | 100                 | ---                | 5,0            |
| B 48 | ---       | ---        | ---                 | ---                | 0,5            |

General specifications:

Material: Shipbuilding steel / forged steel

Finish: Galvanized

Certificate: Workshop certificate, class certificate upon request.

Remark: Other design, dimensions, material and finish upon request.



**Seasafe Transport A/S**

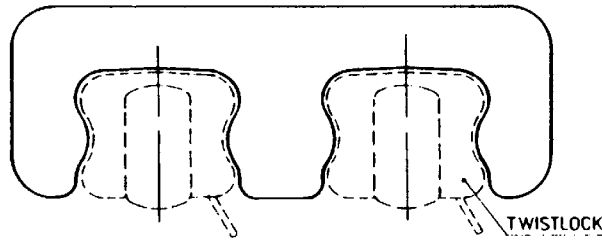
**YOU NAME IT - WE LASH IT**

Filipstadveien 5, N-0250 OSLO, Norway Phone: + 47 - 23 23 96 00 Telefax: + 47 - 23 23 96 01 E-mail: post@seasafe.no

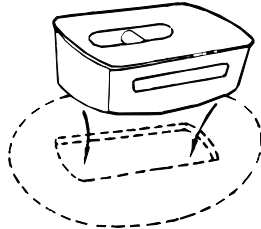
# Linkage plates, plugs, etc.

B 49 - B 53

**B 49**  
Linkage plate



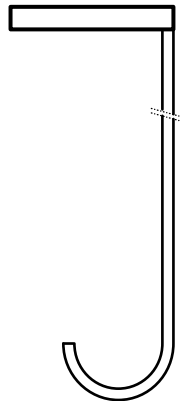
**B 50**  
Rubber plug  
for iso deck fittings



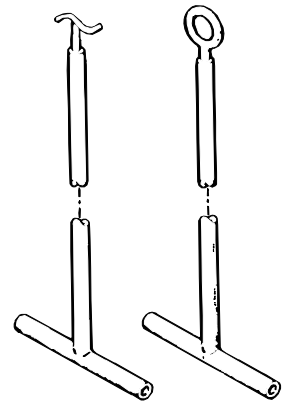
**B 51**  
Plastic plug  
for elephant foot  
fittings



**B 52**  
Plug remover  
for B 50 & B 51



**B 53**  
Twistlock  
actuator pole



| Type | MBL (kN) tension | Weight (kg) | Dimensions mm     |
|------|------------------|-------------|-------------------|
| B 49 | 250              | 11,0/13,0   | c/c 203/258       |
| B 50 | 500              | 0,3         | Ø124x64x50        |
| B 51 | 500              | 0,2         | 175x50x30         |
| B 52 | 500              | 1,5         | length on request |
| B 53 | 500              | 1,5-10,0    | length on request |

General specifications:

Material: Shipbuilding steel / aluminium / rubber / plastic

Finish: Untreated

Certificate: Workshop certificate, class certificate upon request.

Remark: Other design, dimensions, material and finish upon request.



**Seasafe Transport A/S**

**YOU NAME IT - WE LASH IT**

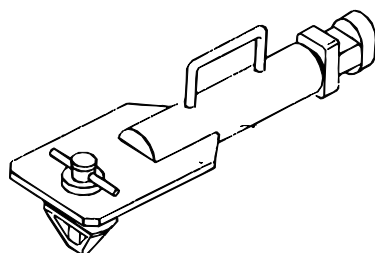
Filipstadveien 5, N-0250 OSLO, Norway Phone: + 47 - 23 23 96 00 Telefax: + 47 - 23 23 96 01 E-mail: post@seasafe.no

## Side supports

B 54 - B 57

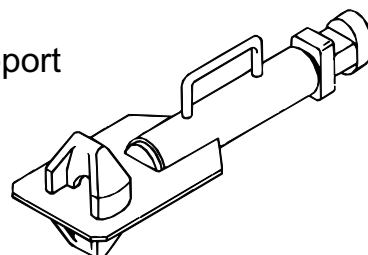
### B 54

Top side support  
tension - pressure



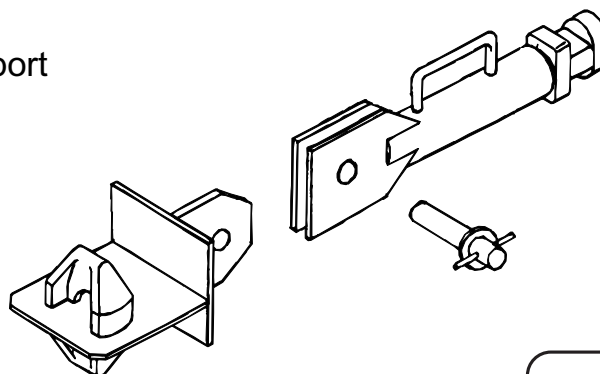
### B 55

Intermediate side support  
tension - pressure



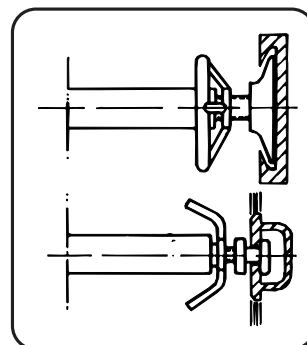
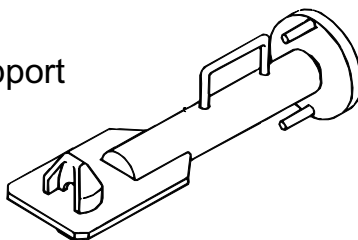
### B 56

Removable side support  
tension - pressure



### B 57

Intermediate side support  
pressure



#### Side supports:

Seasafe offers a wide range of standard side supports, with the possibility to adapt customer specific requirements.

The above shows some of the typical side supports and principles available.

Since side support design, dimensioning, functionality, etc. depend greatly upon customer requirements, details for side supports are only available upon request.

#### General specifications:

Material: Shipbuilding steel / forged steel

Finish: Painted / galvanized

Certificate: Workshop certificate, class certificate upon request.

Remark: Other design, dimensions, material and finish upon request.

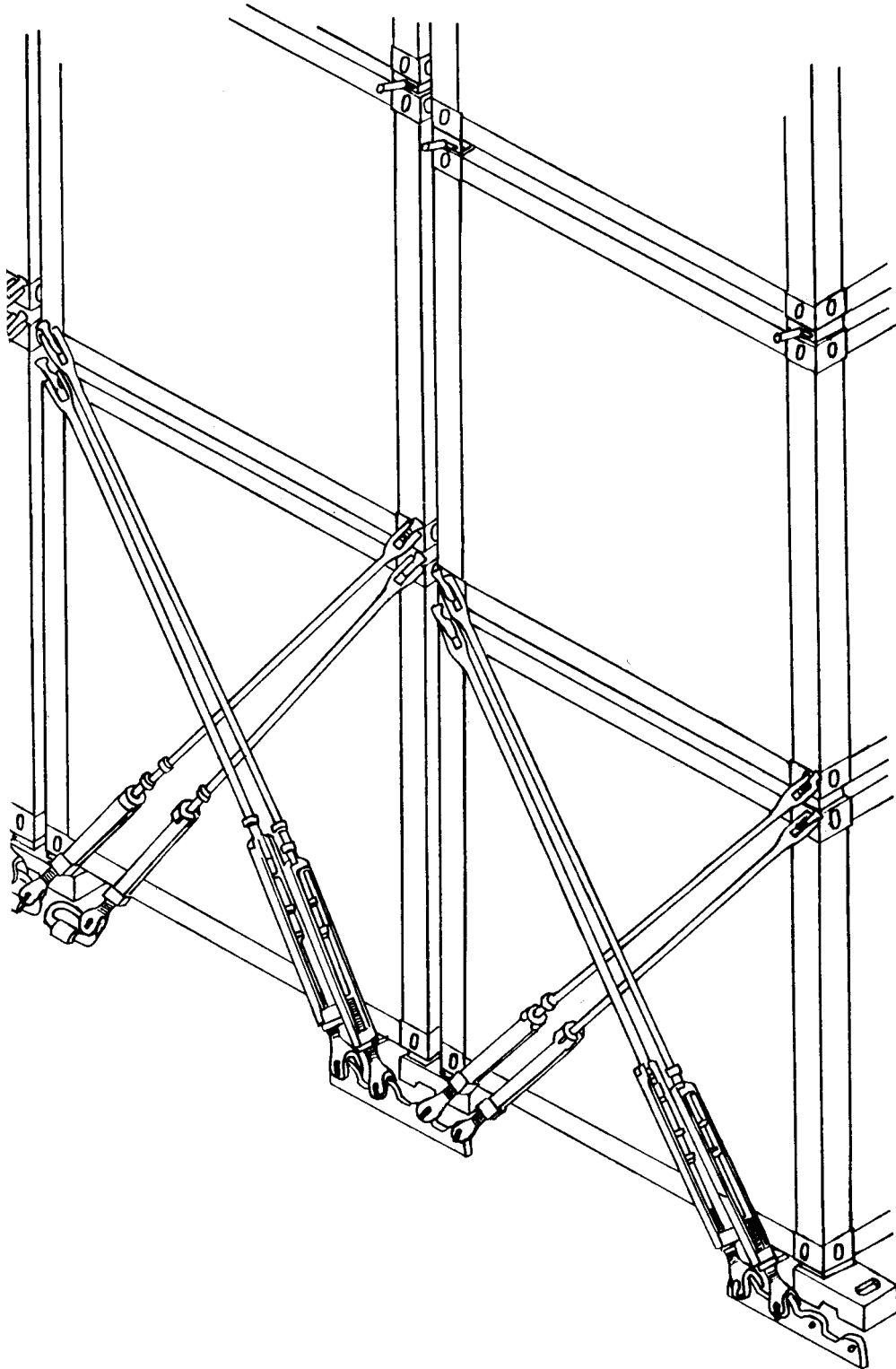


**Seasafe Transport A/S**

**YOU NAME IT - WE LASH IT**

Filipstadveien 5, N-0250 OSLO, Norway Phone: + 47 - 23 23 96 00 Telefax: + 47 - 23 23 96 01 E-mail: post@seasafe.no

# Paralash system



**Seasafe Transport A/S**

**YOU NAME IT - WE LASH IT**

Filipstadveien 5, N-0250 OSLO Norway Phone: + 47 - 23 23 96 00 Fax: + 47 - 23 23 96 01 E-mail: [post@seasafe.no](mailto:post@seasafe.no)

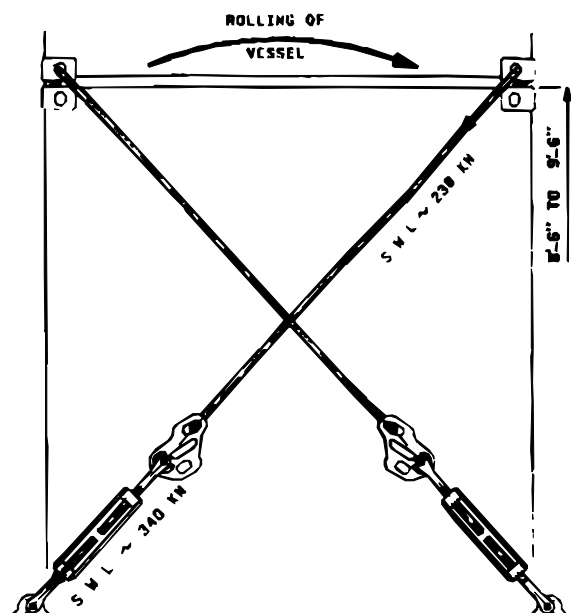


# Paralash system



⚙️ **Whip turnbuckle;** one or two rods in one turnbuckle

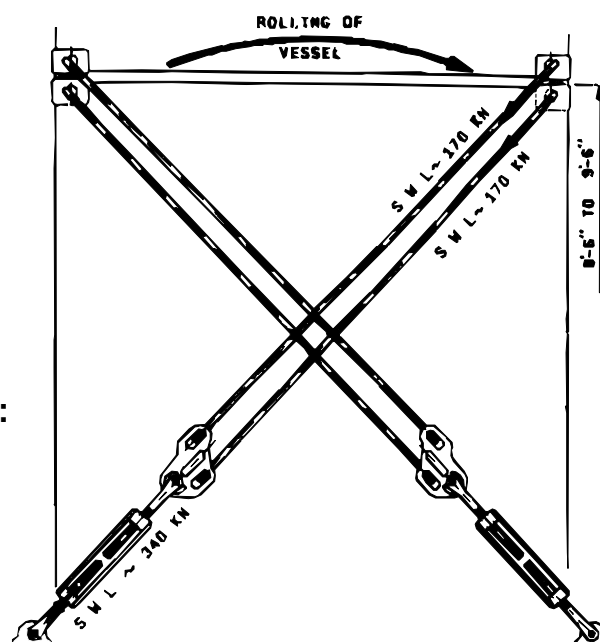
ONE ROD FOR 20 FEET STACKS



⚙️ **Advantages:**

- lower investment
- less lashing time, by ~ 50%
- less operating work
- less maintenance
- less lashing points on hatch covers and decks

TWO RODS FOR 40 FEET STACKS



⚙️ **Whip. turnbuckle specificatons:**

- high adjustment range
- open type, simple maintenance
- hot dip galvanized
- rods msl/mbi: 230/460 kN
- turnbuckle msl/mbi: 340/680 kN
- weight: approx. 21 kg



**Seasafe Transport A/S**

**YOU NAME IT - WE LASH IT**

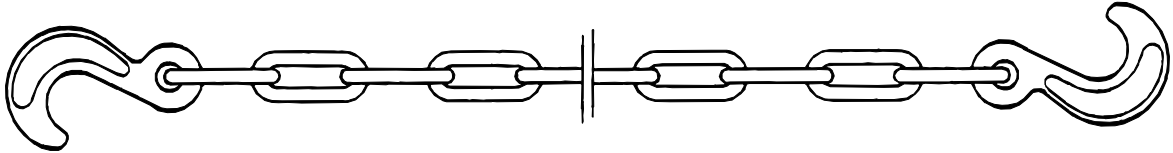
Filipstadveien 5, N-0250 OSLO, Norway Phone: + 47 - 23 23 96 00 Telefax: + 47 - 23 23 96 01 E-mail: post@seasafe.no

# Chain lashing

# C 1

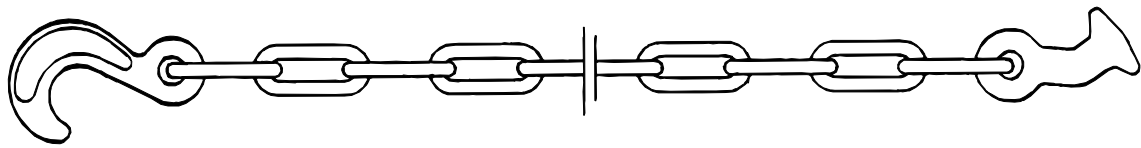
## C1A

Hook - hook



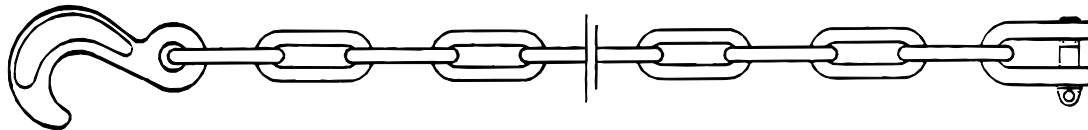
## C1B

Hook - elephant foot



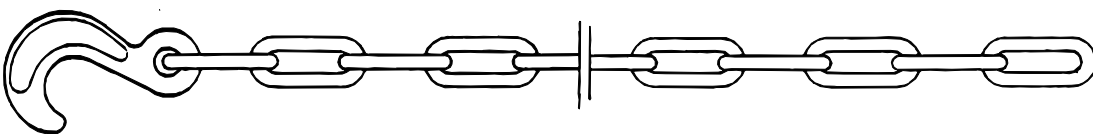
## C1C

Hook - shackle



## C1D

Hook one end



| Chain diameter (mm) | Inside length (mm) | Inside width (mm) | Weight (kg/m) | Proof load kN | Min. Break Load kN |
|---------------------|--------------------|-------------------|---------------|---------------|--------------------|
| 9                   | 57                 | 16                | 1,4           | 60,0          | 100,0              |
| 11                  | 65                 | 19                | 2,1           | 90,0          | 150,0              |
| 13                  | 80                 | 22                | 2,6           | 120,0         | 200,0              |
| 16                  | 88                 | 27                | 4,6           | 160,0         | 320,0              |

### General specifications:

Material: Alloy steel, grade 80 / forged end fittings

Finish: Painted / galvanized

Certificate: Workshop certificate, class certificate upon request.

Remark: Splint type hook as standard (not shown)  
10% strength reduction for galvanizing  
End fittings may also be fitted with shackle.



**Seasafe Transport A/S**

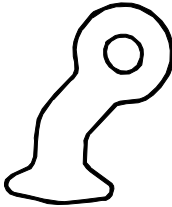
**YOU NAME IT - WE LASH IT**

Filipstadveien 5, N-0250 OSLO, Norway Phone: + 47 - 23 23 96 00 Telefax: + 47 - 23 23 96 01 E-mail: post@seasafe.no

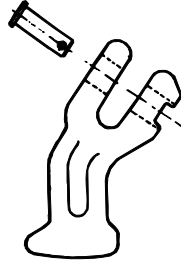
# Securing devices

C 2 - C 4

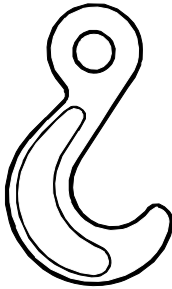
**C 2.1**  
Eye type



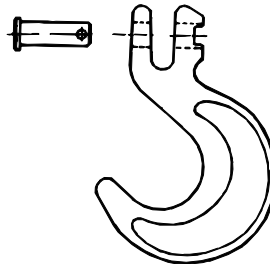
**C 2.2**  
Clevis type



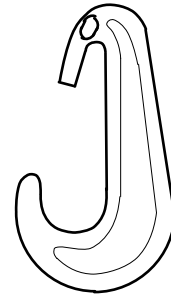
**C 3.1**  
Eye type



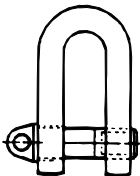
**C 3.2**  
Clevis type



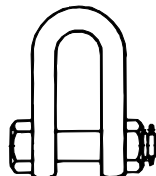
**C 3.3**  
Splint type



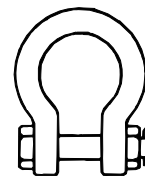
**C 4.1**  
Standard



**C 4.2**  
Straight type



**C 4.3**  
Bow type



| Type                  | For chain diameter (mm) | MBL tension (kN) | Weight (kg) |
|-----------------------|-------------------------|------------------|-------------|
| C 2.1<br>C 2.2        | 9/11/13                 | 200              | 1,0         |
| C 3.1<br>C3.2<br>C3.3 | 9/11/13                 | 100/150/200      | 0,6/0,8/1,3 |
| C4.1<br>C4.2<br>C4.3  | 9/11/13                 | 100/150/200      | 0,4/0,5/0,7 |

General specifications:

Material: Forged steel  
 Finish: Painted / galvanized  
 Certificate: Workshop certificate, class certificate upon request.  
 Remark: Other design, dimensions, material and finish upon request.



**Seasafe Transport A/S**

**YOU NAME IT - WE LASH IT**

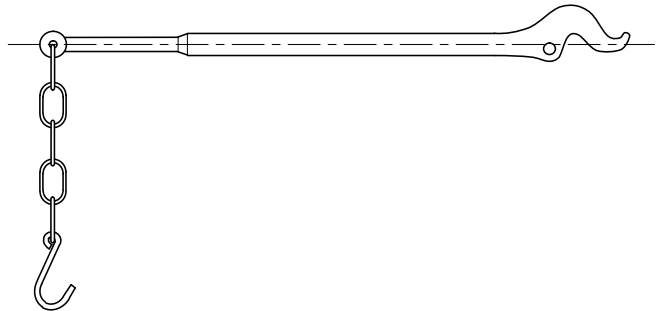
Filipstadveien 5, N-0250 OSLO, Norway Phone: + 47 - 23 23 96 00 Telefax: + 47 - 23 23 96 01 E-mail: post@seasafe.no

# Chain levers

# C 5 - C 7

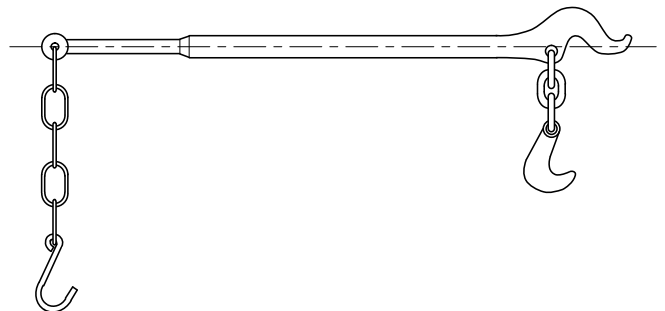
## C 5

Chain lever without climb hook



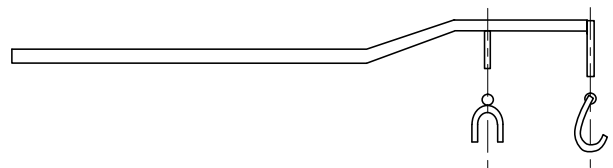
## C 6

Chain lever with climb hook



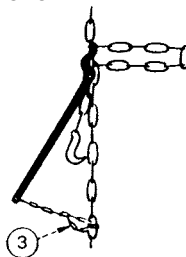
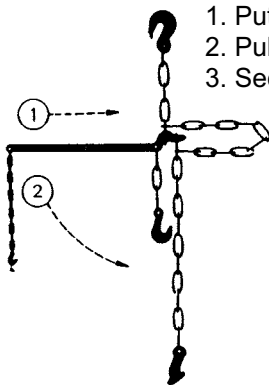
## C 7

Extension handle



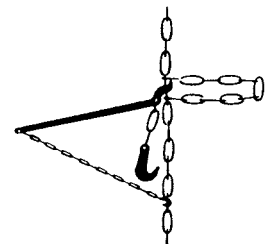
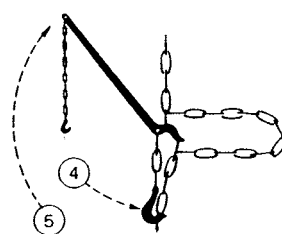
### ⚙️ Instructions for use:

1. Put in lever
2. Pull it down
3. Secure lever



### ⚙️ For further tightening:

4. Swing in hook
5. Pull back lever
6. Grab next link and pull lever down again



| Type  | For chain diameter (mm) | MBL tension (kN) | Weight (kg) |
|-------|-------------------------|------------------|-------------|
| C 5.1 | 9                       | 100              | 2,6         |
| C 5.2 | 11                      | 150              | 2,8         |
| C 5.3 | 13                      | 200              | 4,0         |
| C 6.1 | 9                       | 100              | 3,5         |
| C 6.2 | 11                      | 150              | 3,9         |
| C 6.3 | 13                      | 200              | 6,0         |
| C 7   | 9/11/13                 | ---              | 3,5         |

### General specifications:

- Material: Forged steel
- Finish: Painted / galvanized
- Certificate: Workshop certificate, class certificate upon request.
- Remark: Other design, dimensions, material and finish upon request.



**Seasafe Transport A/S**

**YOU NAME IT - WE LASH IT**

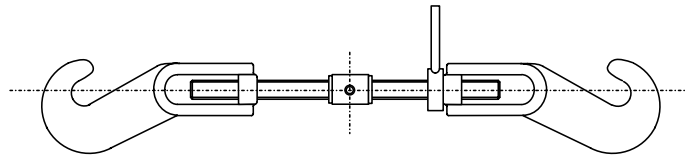
Filipstadveien 5, N-0250 OSLO, Norway Phone: + 47 - 23 23 96 00 Telefax: + 47 - 23 23 96 01 E-mail: post@seasafe.no

# Turnbuckles & load binders

C 8 - C 11

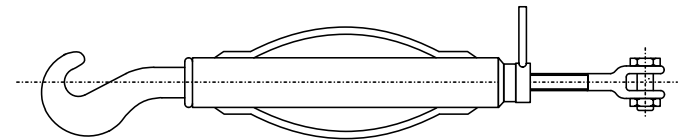
## C 8

Open body turnbuckle  
with double chain hook



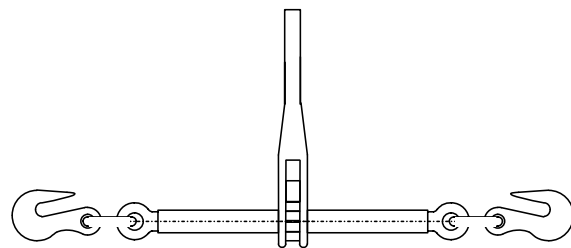
## C 9

Closed body turnbuckle  
hook - jaw  
C 9.1 elephant foot lower end  
C 9.2 hook lower end



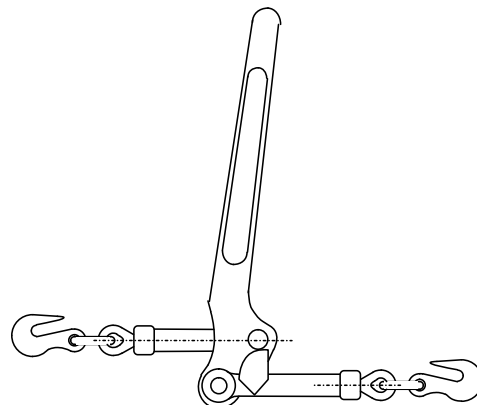
## C 10.1

Load binder  
ratchet type



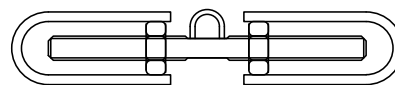
## C 10.2

Load binder  
walking type



## C 11

Spindle tensioner



| Type   | MBL (kN)<br>tension | Weight<br>(kg) | Take-up<br>(mm) |
|--------|---------------------|----------------|-----------------|
| C 8    | 200                 | 5,0            | 200             |
| C 9    | 200                 | 6,0            | 200             |
| C 10.1 | 200                 | 6,5            | 200             |
| C 10.2 | 150                 | 6,0            | endless         |
| C 11   | 200                 | 4,0            | 200             |

### General specifications:

Material: Forged steel / shipbuilding steel

Finish: Galvanized / untreated

Certificate: Workshop certificate, class certificate upon request.

Remark: Other design, dimensions, material and finish upon request.



**Seasafe Transport A/S**

**YOU NAME IT - WE LASH IT**

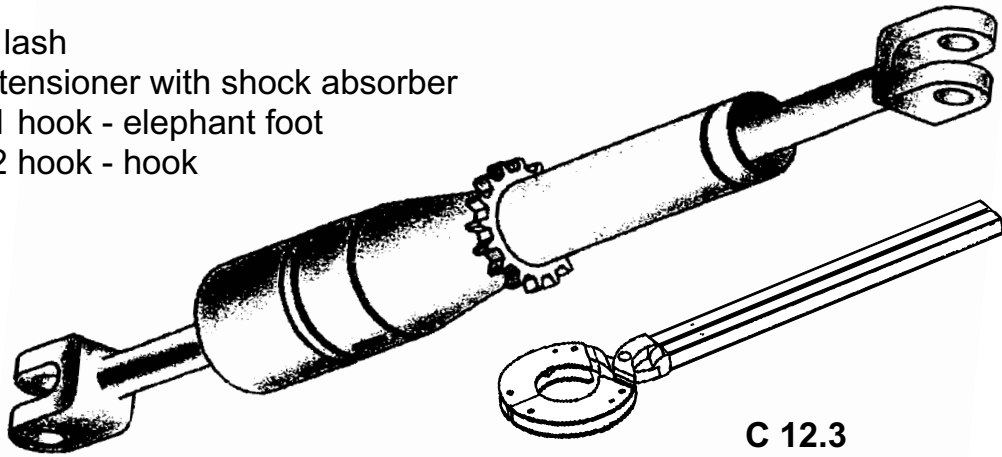
Filipstadveien 5, N-0250 OSLO, Norway Phone: + 47 - 23 23 96 00 Telefax: + 47 - 23 23 96 01 E-mail: post@seasafe.no

# Quick lash & Trailer winch

C 12 - C 13

## C 12

Quick lash  
chain tensioner with shock absorber  
C 12.1 hook - elephant foot  
C 12.2 hook - hook

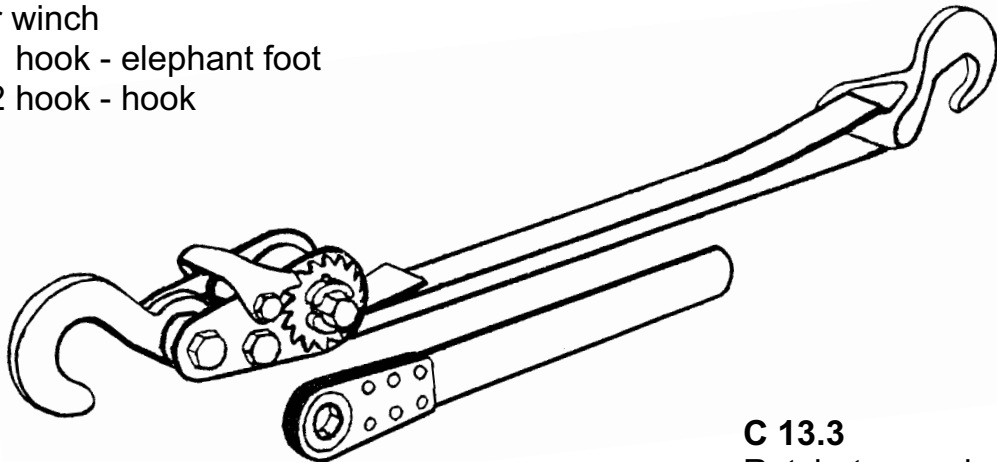


## C 12.3

Ratchet tightener  
for quick lash

## C 13

Trailer winch  
C 13.1 hook - elephant foot  
C 13.2 hook - hook



## C 13.3

Ratchet wrench  
for trailer winch, 28 mm

| Type             | MBL (kN)<br>tension | Weight<br>(kg) | Take-up<br>(mm) |
|------------------|---------------------|----------------|-----------------|
| C 12.1<br>C 12.2 | 200                 | 5,5            | 200             |
| C 12.3           | ---                 | 1,0            | ---             |
| C 13.1<br>C 13.2 | 150/200             | 9,0            | unlimited       |
| C 13.3           | ---                 | 2,0            |                 |

(28 mm hex)

### General specifications:

Material: Forged steel / shipbuilding steel / polyester

Finish: Painted / galvanized

Certificate: Workshop certificate, class certificate upon request.

Remark: C 13 is supplied with 65 mm 100% polyester webbing material, length upon request.



**Seasafe Transport A/S**

**YOU NAME IT - WE LASH IT**

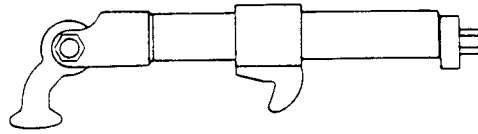
Filipstadveien 5, N-0250 OSLO, Norway Phone: + 47 - 23 23 96 00 Teleax: + 47 - 23 23 96 01 E-mail: post@seasafe.no

# Speedlash with chain clutch

C 14

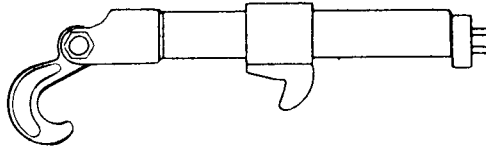
## C 14.1

Speedlash NL20  
with elephant foot



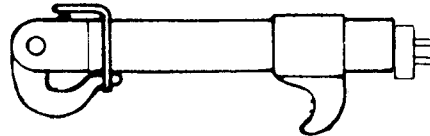
## C 14.2

Speedlash NL20  
with hook



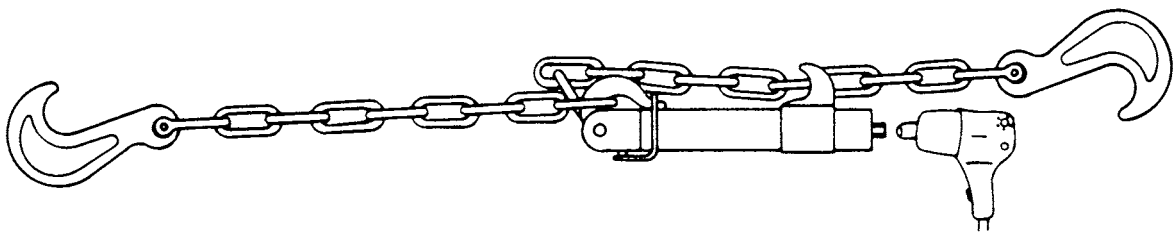
## C 14.3

Speedlash NL20  
with pelican hook



## C 14

Speedlash NL-20 combined  
with 13 mm chain, mbl: 20 tons



| Type   | MBL (kN)<br>tension | Weight<br>(kg) | Take-up<br>(mm) |
|--------|---------------------|----------------|-----------------|
| C 14.1 | 200                 | 6,0            | 250             |
| C 14.2 | 200                 | 6,0            | 250             |
| C 14.3 | 200                 | 6,0            | 250             |
|        |                     |                | 250             |

### General specifications:

Material: Forged steel / shipbuilding steel

Finish: Galvanized

Certificate: Workshop certificate, class certificate upon request.

Remark: Modified designs available  
C 14.3 may be supplied with climb hook and chain.



**Seasafe Transport A/S**

**YOU NAME IT - WE LASH IT**

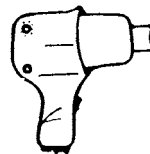
Filipstadveien 5, N-0250 OSLO, Norway Phone: + 47 - 23 23 96 00 Telefax: + 47 - 23 23 96 01 E-mail: post@seasafe.no

## Speedlash accessories

C 15

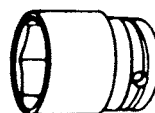
### C 15.1

Impact tool hammer  
pneumatic, 7 kg/cm<sup>2</sup>



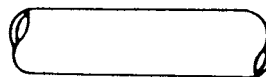
### C 15.2

Hexagon sleeve  
24 mm



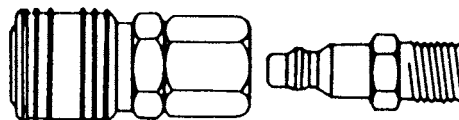
### C 15.3

Rubber hose



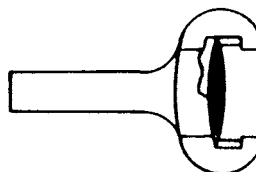
### C 15.4

Quick release connection  
male + female



### C 15.5

Claw coupling



### C 15.6

Ratchet for Speedlash



**Seasafe Transport A/S**

**YOU NAME IT - WE LASH IT**

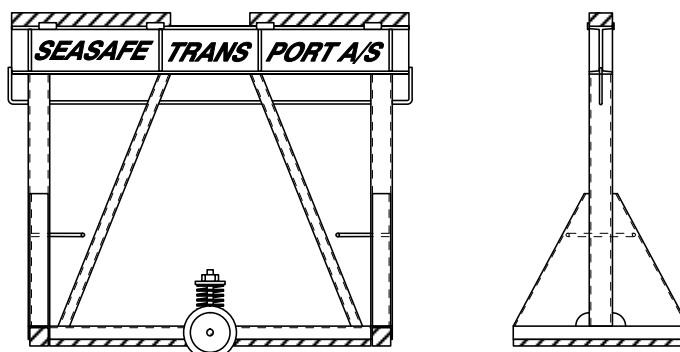
Filipstadveien 5, N-0250 OSLO, Norway Phone: + 47 - 23 23 96 00 Telefax: + 47 - 23 23 96 01 E-mail: [post@seasafe.no](mailto:post@seasafe.no)



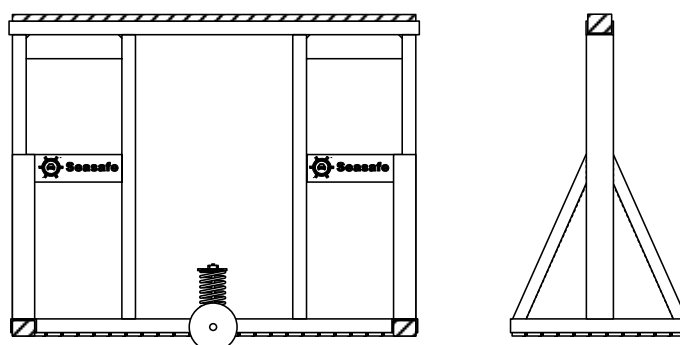
# Trailer horses

# C 16

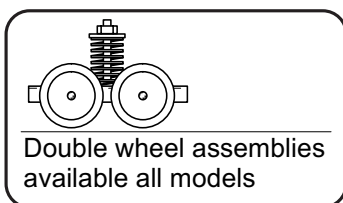
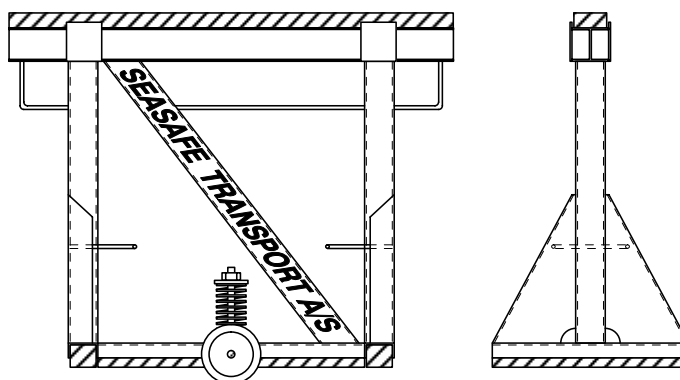
**C16A**  
Trailer horse



**C16B**  
Trailer horse



**C16C**  
Trailer horse



| Type | Length (mm) | Height (mm) | MBL (kN) tension | Weight (kg) |
|------|-------------|-------------|------------------|-------------|
| C16A | 1500        | 1250        | 1000             | 140         |
| C16B | 1420        | 1250        | 1000             | 140         |
| C16C | 1500        | 1250        | 1000             | 160         |
|      |             |             |                  |             |
|      |             |             |                  |             |

General specifications:

Material: Shipbuilding steel

Finish: Painted or galvanized

Certificate: Workshop certificate, class certificate upon request.

Remark: Other design, dimensions, material and finish upon request.



**Seasafe Transport A/S**

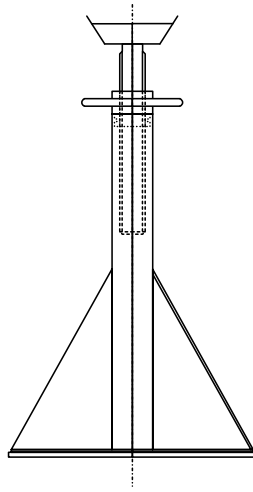
**YOU NAME IT - WE LASH IT**

Filipstadveien 5, N-0250 OSLO, Norway Phone: + 47 - 23 23 96 00 Telefax: + 47 - 23 23 96 01 E-mail: post@seasafe.no

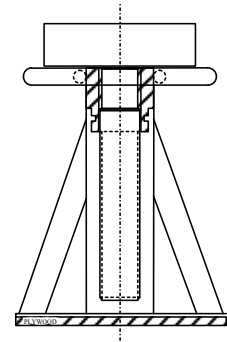
# Trailer jacks & wheel chocks

C 17 - C 20

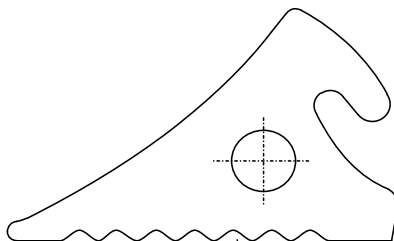
**C 17**  
Trailer jack  
with handwheel



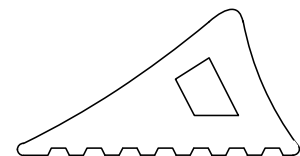
**C 18**  
Mafi Jack  
with hand wheel



**C 19**  
Trailer wheel chock  
rubber



**C 20**  
Car wheel chock  
rubber



| Type | MBL (kN)<br>tension | Weight<br>(kg) | Dimensions<br>mm |
|------|---------------------|----------------|------------------|
| C 17 | 500                 | 35,0           | H 950-1250       |
| C 18 | 500                 | 14,0           | H 370-580        |
| C 19 | ---                 | 5,5            | 290x150x190      |
| C 20 | ---                 | 2,0            | 210x100x120      |

General specifications:

- Material: Forged steel / Shipbuilding steel / rubber
- Finish: Painted / untreated
- Certificate: Workshop certificate, class certificate upon request.
- Remark: Other design, dimensions, material and finish upon request.



**Seasafe Transport A/S**

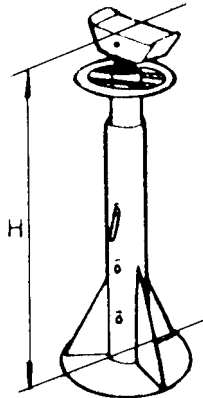
**YOU NAME IT - WE LASH IT**

Filipstadveien 5, N-0250 OSLO, Norway Phone: + 47 - 23 23 96 00 Telefax: + 47 - 23 23 96 01 E-mail: post@seasafe.no

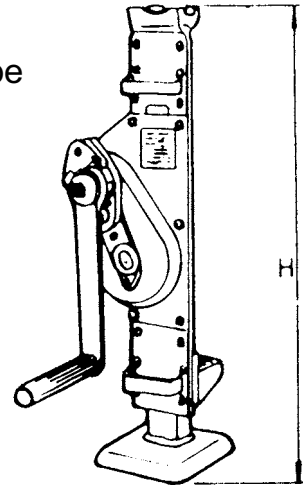
# Railway jacks & chocks

C 21 - C 23

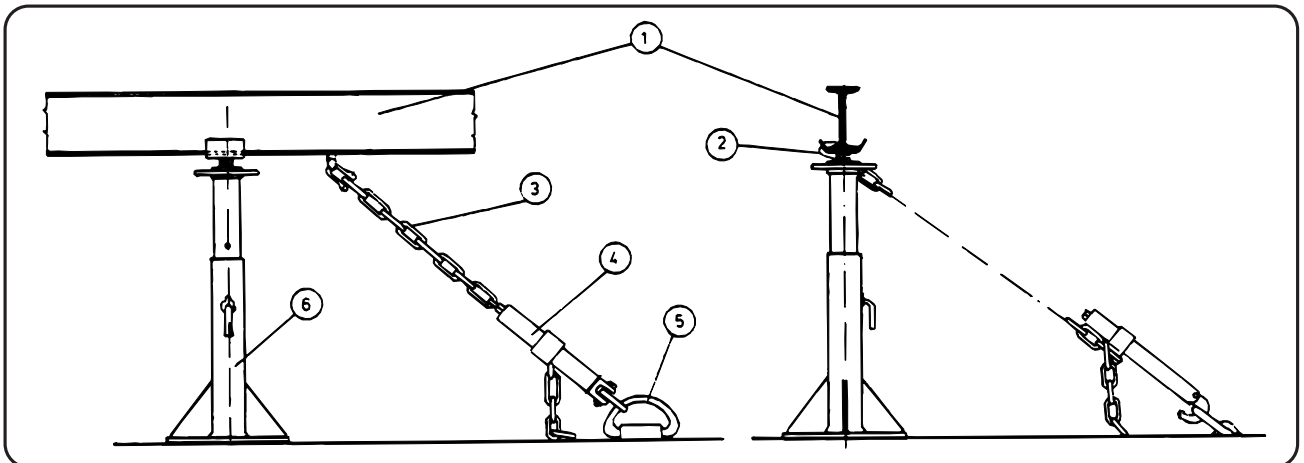
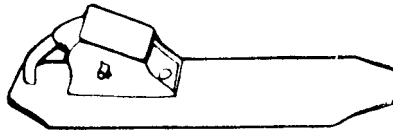
**C 21**  
Railway jack  
with hand wheel



**C 22**  
Railway jack  
rack & pinion type



**C 23**  
Railway chock  
single type shown  
double type also  
available



| Type | Strength (kN) | Weight (kg) | Dimensions mm     |
|------|---------------|-------------|-------------------|
| C 21 | 200           | 38,0        | H 760-1300        |
| C 22 | 70/100        | 40,0        | H 90-320/770-1090 |
| C 23 | ---           | 8,0         | 520x76x125        |
|      |               |             |                   |
|      |               |             |                   |

General specifications:

Material: Forged steel / shipbuilding steel

Finish: Painted

Certificate: Workshop certificate, class certificate upon request.

Remark: Other design, dimensions, material and finish upon request.



**Seasafe Transport A/S**

**YOU NAME IT - WE LASH IT**

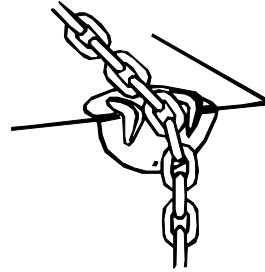
Filipstadveien 5, N-0250 OSLO, Norway Phone: + 47 - 23 23 96 00 Telefax: + 47 - 23 23 96 01 E-mail: post@seasafe.no

# Corner protectors

C 24 - C 26

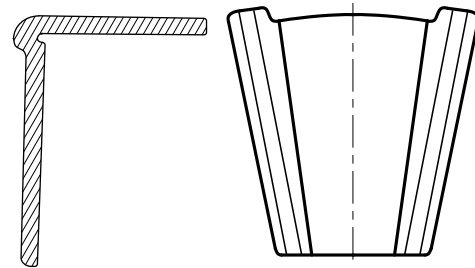
## C 24

Corner protector  
for chain lashings  
galvanized steel



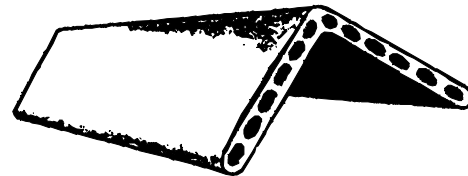
## C 25

Corner protector  
pvc, for paper rolls



## C 26

Corner protector  
pvc, 190x190 mm  
length: 6,0 m  
other upon request



| Type | MBL (kN)<br>tension | Weight<br>(kg) | Dimensions<br>(mm) |
|------|---------------------|----------------|--------------------|
| C 24 | ---                 | 0,75           | Ø200xT3,0          |
| C 25 | ---                 | 0,3            | 195x145 W160       |
| C 26 | ---                 | 3,1/m          | 190x190 T20        |
|      |                     |                |                    |
|      |                     |                |                    |

### General specifications:

Material: Steel / pvc plastic  
 Finish: Galvanized / untreated  
 Certificate: Workshop certificate, class certificate upon request.  
 Remark: Other design, dimensions, material and finish upon request.



**Seasafe Transport A/S**

**YOU NAME IT - WE LASH IT**

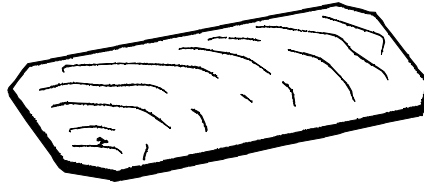
Filipstadveien 5, N-0250 OSLO, Norway Phone: + 47 - 23 23 96 00 Telefax: + 47 - 23 23 96 01 E-mail: post@seasafe.no

## Cargo nets & Dunnage bags

C 27 - C 30

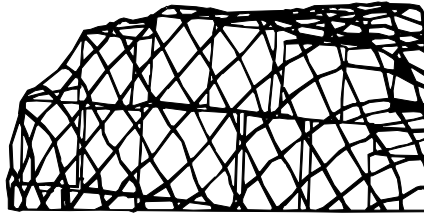
### C 27

Walking board  
plywood, laminated wood  
1200 x 2440 x 7,5 mm



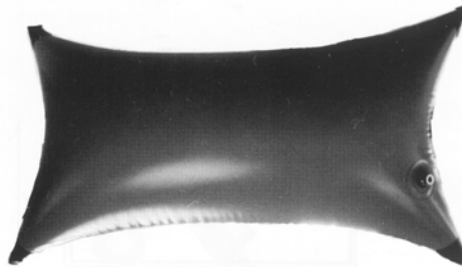
### C 28

Cargo net  
polypropylene



### C 29

Dunnage bags  
paper, pvc or rubber  
different sizes upon  
request



### C 30

Marine fenders  
low weight - easy handling  
pvc/polyester or rubber  
sizes upon request



#### General specifications:

Material: PVC/polyester / rubber / paper / polyprop.

Finish: Untreated

Certificate: Workshop certificate, class certificate  
upon request.

Remark: Other design, dimensions, material  
and finish upon request.



**Seasafe Transport A/S**

Filipstadveien 5, N-0250 OSLO, Norway Phone: + 47 - 23 23 96 00 Telefax: + 47 - 23 23 96 01 E-mail: [post@seasafe.no](mailto:post@seasafe.no)

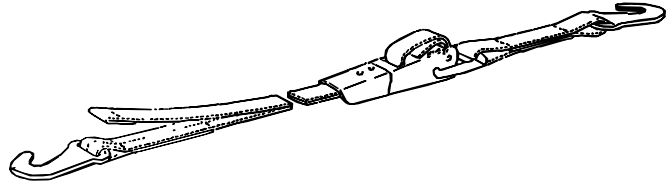
**YOU NAME IT - WE LASH IT**

# Car, truck & web lashings

C 31 - C 35

## C 31

Car lashing  
flat hooks both ends  
excenter handle tightener  
optional loop upper end



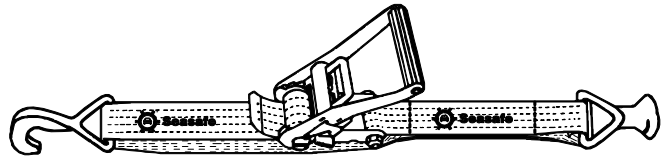
## C 32

Web lashing  
thread type hooks both ends  
optional elephant foot lower end  
ratchet tightener with transport securing



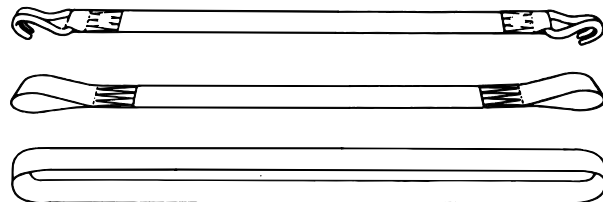
## C 33

Web lashing  
forged hooks and elephant foot  
optional hook lower end  
ratchet tightener with transport securing



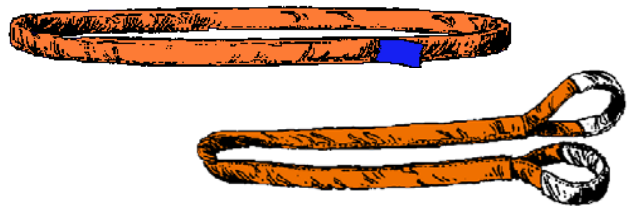
## C 34

Web straps and slings  
various dimensions and strengths  
details upon request



## C 35

Round straps and slings  
various dimensions and strengths  
details upon request



| Type | MBL tension  | Weight (kg) | Webbing width (mm) |
|------|--------------|-------------|--------------------|
| C 31 | 1200-2000 kg | 0,7         | 25                 |
| C 32 | 2,5-15,0 t   | varies      | 35-70              |
| C 33 | 5,0-12,0 t   | 4,0         | 50                 |
| C 34 | upon request | varies      | upon request       |
| C 35 | upon request | varies      | upon request       |

### General specifications:

Material: High strength steel / polyester webbing  
Finish: Yellow chromated / galvanized / painted / plastic coated  
Certificate: Workshop certificate, class certificate upon request.  
Remark: Other design, dimensions, material and finish upon request.



**Seasafe Transport A/S**

**YOU NAME IT - WE LASH IT**

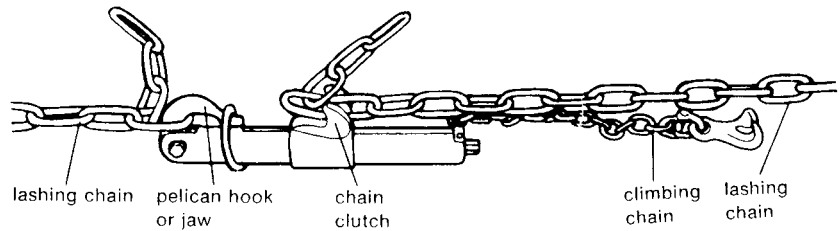
Filipstadveien 5, N-0250 OSLO, Norway Phone: + 47 - 23 23 96 00 Telefax: + 47 - 23 23 96 01 E-mail: post@seasafe.no

# Timber lashing

C 36 - C 38

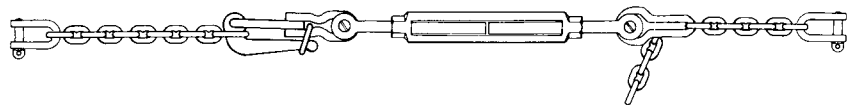
## C 36

Speedlash NL20  
with pelican hook  
and climbing chain  
mbl: 20 tonnes



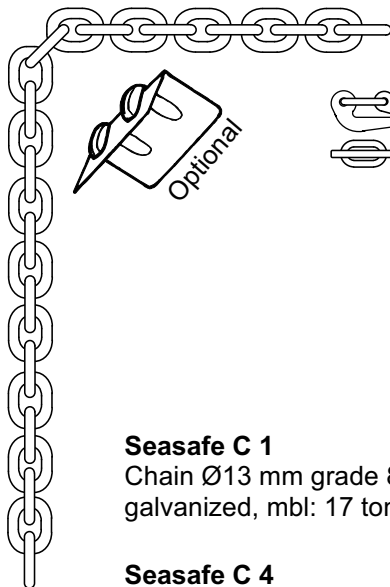
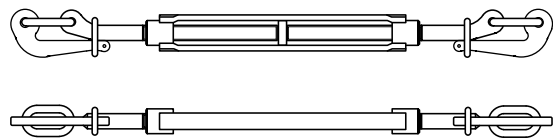
## C 37

Rigging screw  
slip hook - pear link  
galvanized, mbl: 15 t



## C 38

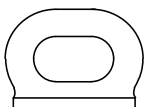
Rigging screw  
slip hook both ends  
mbl: 15 t



**Seasafe C 1**  
Chain Ø13 mm grade 80  
galvanized, mbl: 17 tonnes



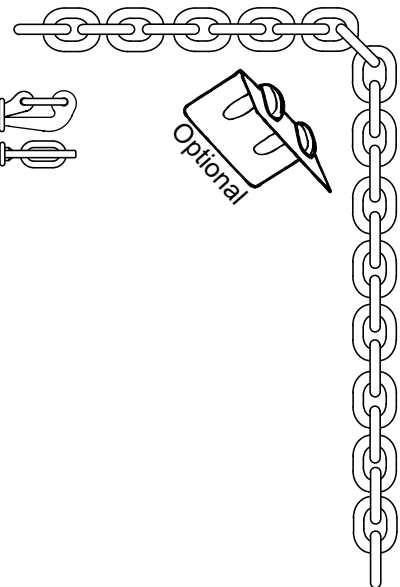
**Seasafe C 4**  
Shackle M24 galvanized  
with 50 mm opening  
mbl: 17 tonnes



**Seasafe A 15.1**  
Lashing plate / pade eye  
mbl: 20 tonnes



**Seasafe C 37 / C 38**  
Rigging screw  
mbl: 15 tonnes



In accordance with  
**Canadian Coast Guard Requirements**

$$\text{HEIGHT}_{(\text{CARGO} - \text{MAX})} = 0,33 \times B_{(\text{MLD.})}$$

$$\text{BREAK LOAD}_{(\text{MIN.})} = 30\,000 \text{ LBS} = 13,6 \text{ T}$$



**Seasafe Transport A/S**

**YOU NAME IT - WE LASH IT**

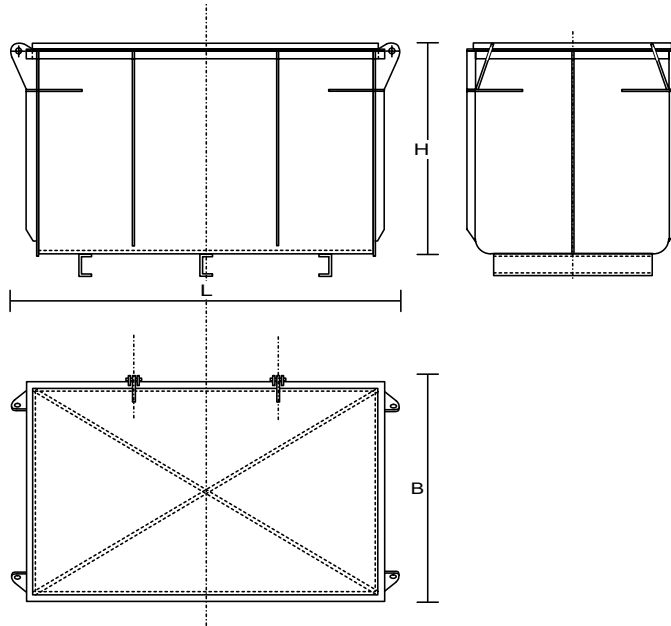
Filipstadveien 5, N-0250 OSLO, Norway Phone: + 47 - 23 23 96 00 Telefax: + 47 - 23 23 96 01 E-mail: post@seasafe.no

# Lashing bins & racks

## C 39 - 40

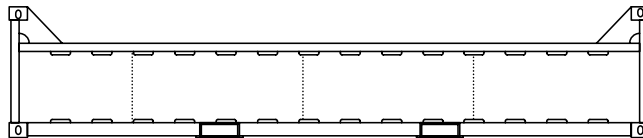
### C 39

Lashing bin  
1300x1140x730 mm

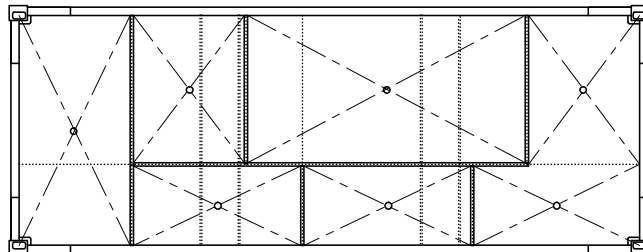


### C 40

Lashing rack  
stackable 20 feet  
half height container



also available:  
Storage rack for  
lashing bins type C39



#### Lashing bins & racks

Lashing bins & racks are supplied in accordance with customer specific requirements.

Although a general standard is available, the project specific details are significantly affecting the general design to such an extent that it is not appropriate to include further details in this catalogue.

Detail drawings available upon request.

#### General specifications:

- Material: Shipbuilding steel
- Finish: Painted or galvanized
- Certificate: Workshop certificate, class certificate upon request.
- Remark: Other design, dimensions, material and finish upon request.



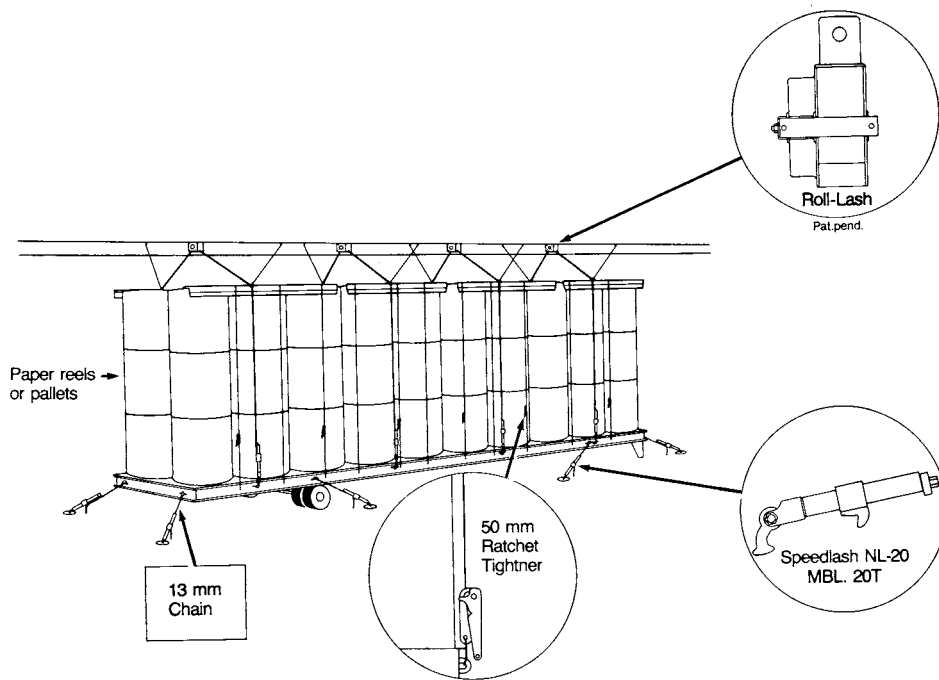
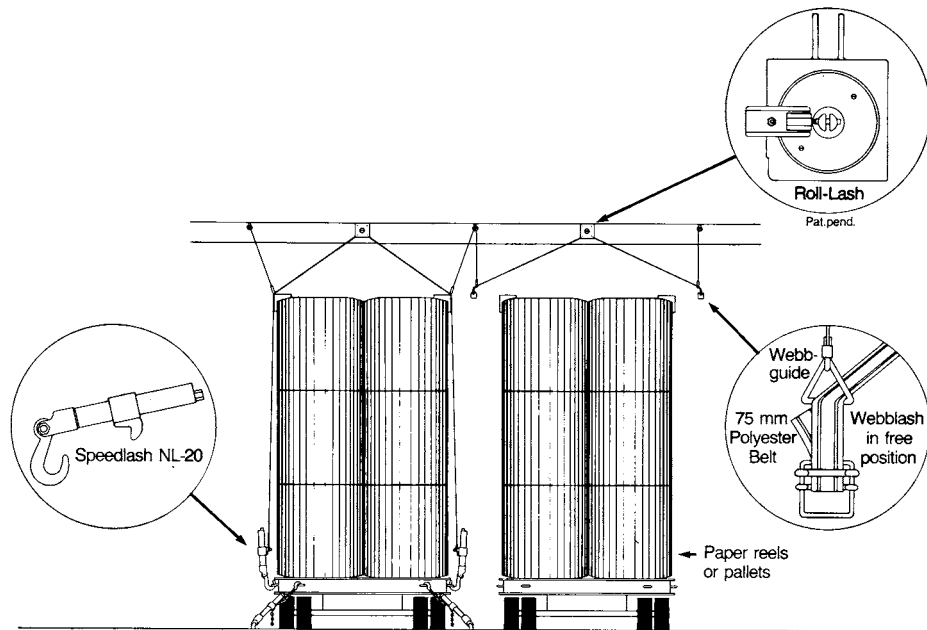
**Seasafe Transport A/S**

**YOU NAME IT - WE LASH IT**

Filipstadveien 5, N-0250 OSLO, Norway Phone: + 47 - 23 23 96 00 Fax: + 47 - 23 23 96 01 E-mail: post@seasafe.no



# Roll-Lash system (Pat. Pend)



## Seasafe's patented Roll-Lash system; designed to prevent cargo from shifting on roll trailers

The system is based on a series of spring loaded drums permanently secured to the deck head above the trailer lanes. 10 tonne capacity web lashings are pulled down with a boat hook and attached to standard Seasafe tensioners, which again are attached to lashing points on the trailer.

The trailer itself is secured to the deck using 13 mm chains, again secured with Seasafe's Speedlash. AT the discharge point, the Roll-Lash webbing is released, and the belts automatically wind back into the winch housings, much like a car seat belt.



**Seasafe Transport A/S**

**YOU NAME IT - WE LASH IT**

Filipstadveien 5, N-0250 OSLO, Norway Phone: + 47 - 23 23 96 00 Telefax: + 47 - 23 23 96 01 E-mail: post@seasafe.no

# Semi trailer lashing

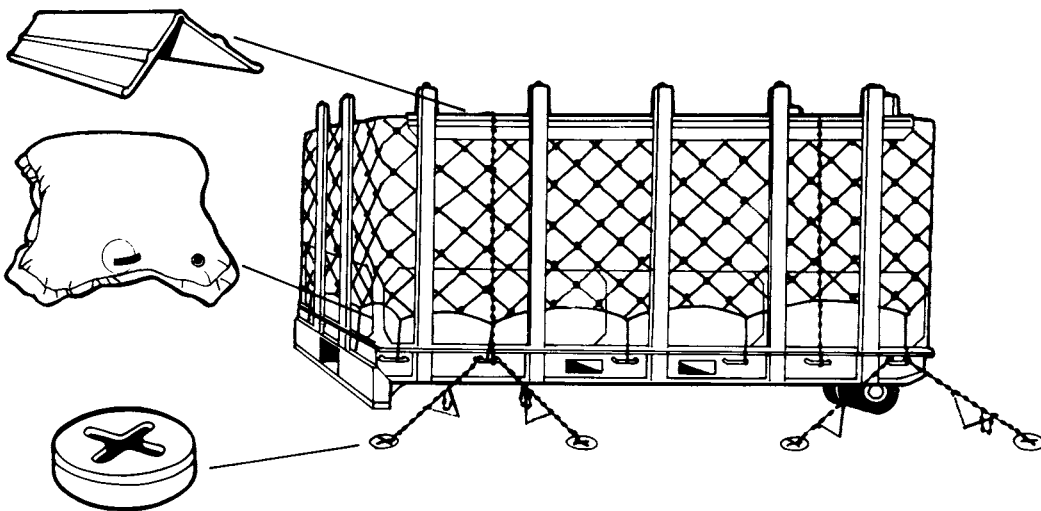
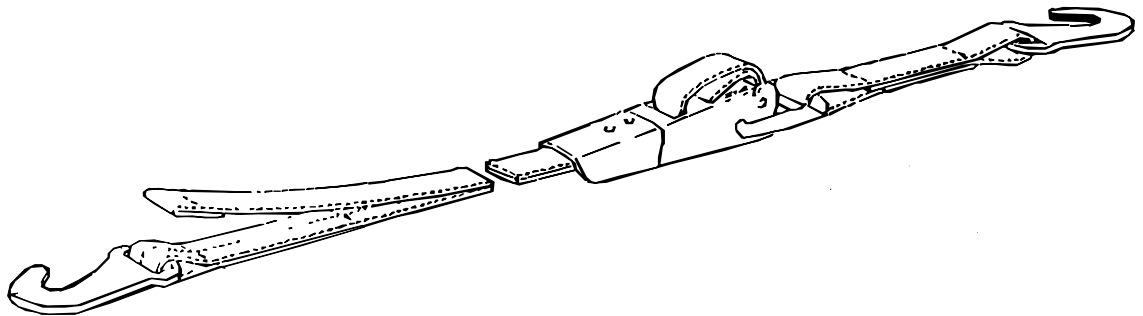
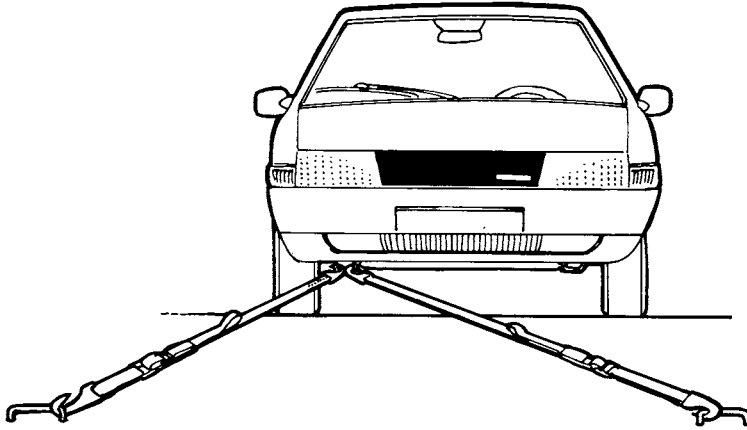


**Seasafe Transport A/S**

**YOU NAME IT - WE LASH IT**

Filipstadveien 5, N-0250 OSLO, Norway Phone: + 47 - 23 23 96 00 Telefax: + 47 - 23 23 96 01 E-mail: post@seasafe.no

# Car lashing and Roll trailer arr.



**Seasafe Transport A/S**

**YOU NAME IT - WE LASH IT**

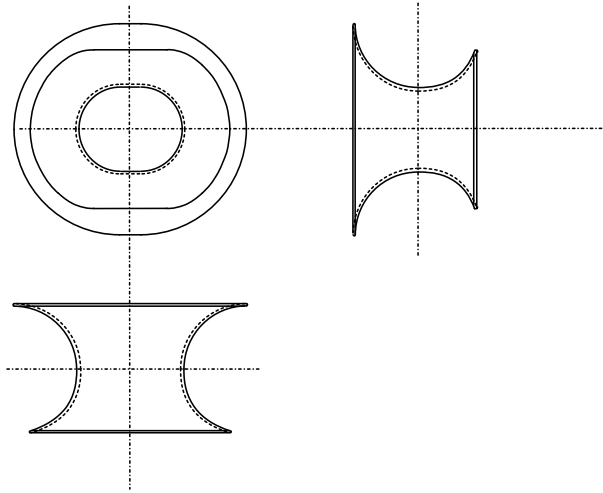
Filipstadveien 5, N-0250 OSLO, Norway Phone: + 47 - 23 23 96 00 Telefax: + 47 - 23 23 96 01 E-mail: post@seasafe.no

# Mooring equipment

D 1 - D 3

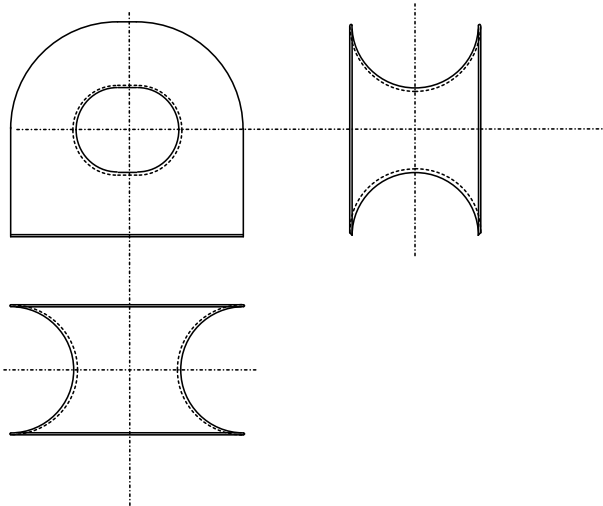
## D 1

Chocks  
for installation in bulwark



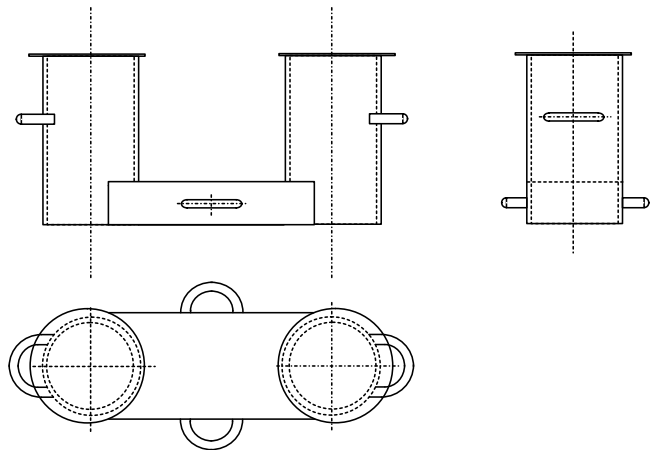
## D 2

Chocks  
free standing type



## D 3

Bollards



⚙️ Sizes and break loads upon request



**Seasafe Transport A/S**

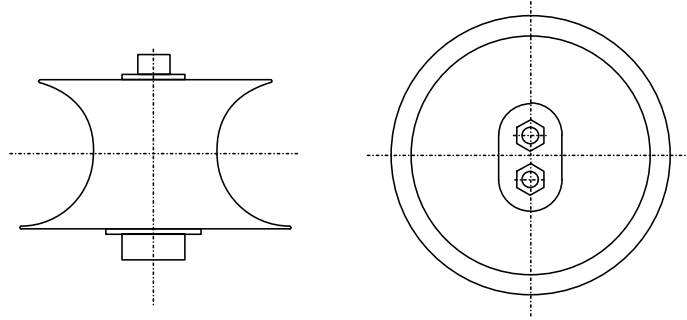
**YOU NAME IT - WE LASH IT**

Filipstadveien 5, N-0250 OSLO, Norway Phone: + 47 - 23 23 96 00 Telefax: + 47 - 23 23 96 01 E-mail: post@seasafe.no

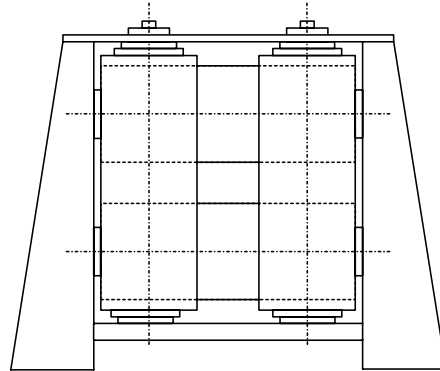
# Mooring equipment

D 4 - D 6

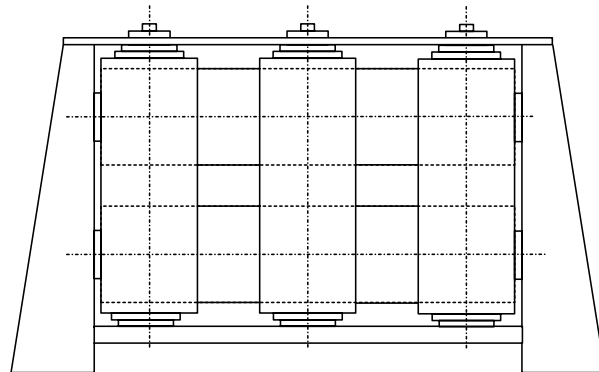
**D 4**  
Roller fairleads



**D 5**  
Roller chocks



**D 6**  
Double roller chocks



⚙️ Sizes and break loads upon request



**Seasafe Transport A/S**

**YOU NAME IT - WE LASH IT**

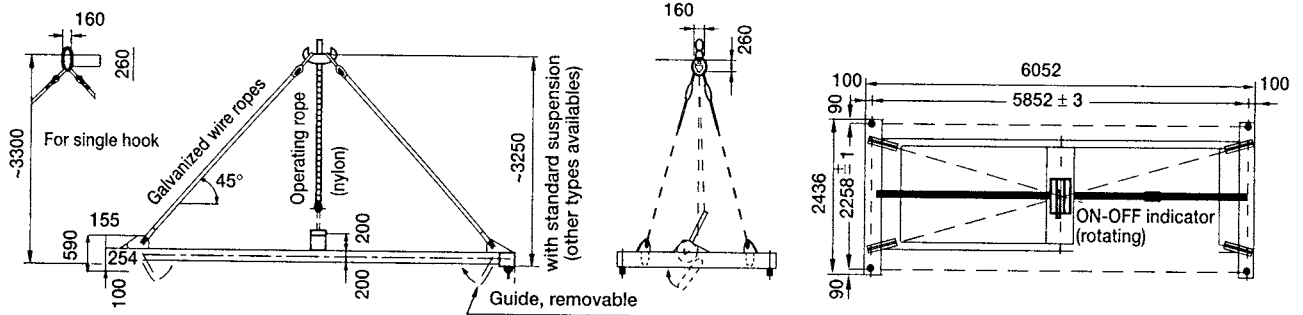
Filipstadveien 5, N-0250 OSLO, Norway Phone: + 47 - 23 23 96 00 Telefax: + 47 - 23 23 96 01 E-mail: [post@seasafe.no](mailto:post@seasafe.no)

# Container spreaders

## D 7 - D 8

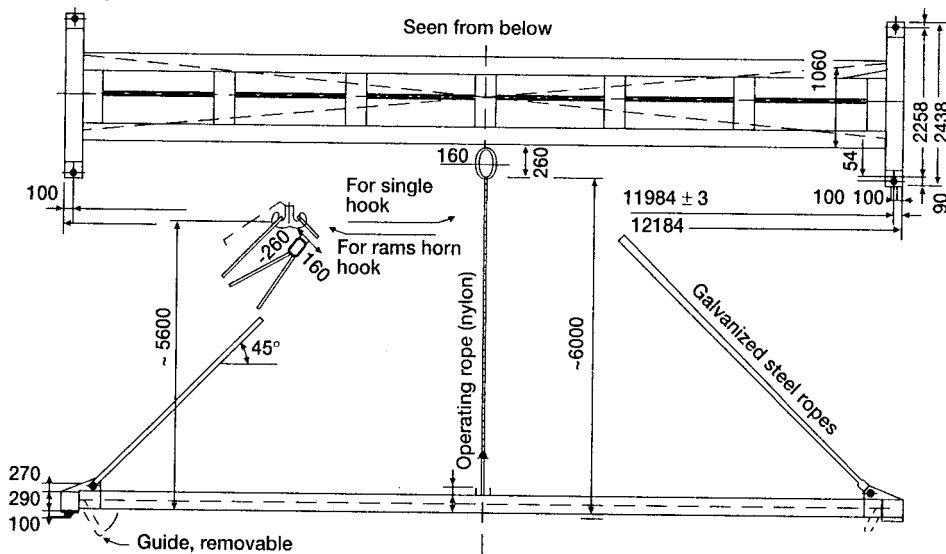
### D 7

20 feet container spreader  
 weight: 1000 kg  
 lifting capacity 32 tons s.w.l.



### D 8

40 feet container spreader  
 weight: 1800 kg  
 lifting capacity 35 tons s.w.l.



| Type | Capacity (tonnes) | Weight (kg) | Dimensions (mm)   |
|------|-------------------|-------------|---|
| D 7  | 32,0              | 1000        | 5852x2258<br>Semi-automatic/Automatic type  |
| D 8  | 35,0              | 1800        | 11984x2258<br>Semi-automatic/Automatic type<br>Telescopic version 35-40 feet also available |

#### General specifications:

Material: Shipbuilding steel  
 Finish: Painted  
 Certificate: Workshop certificate, class certificate upon request.  
 Remark: Other design, dimensions, material and finish upon request.



**Seasafe Transport A/S**

**YOU NAME IT - WE LASH IT**

Filipstadveien 5, N-0250 OSLO, Norway Phone: + 47 - 23 23 96 00 Telefax: + 47 - 23 23 96 01 E-mail: post@seasafe.no

## **Helinos** drinking water sterilizers

### **Functions:**

The germicidal effect of ultraviolet light purifies water without changing its physical or chemical composition.

The Helinos sterilizers are built upon this principle. No chemicals to add, no allergy effects, no incorrect dosing, however still with outgoing sterilized water.

The Helinos sterilizers consist of vertically set treatment chambers with centered lamps emitting ultra violet light at the passing waterflow.

The dosage of UV is continuously monitored by an electronic unit which is preset at a certain threshold value. If the dosage by any reason should fall below this value, the water supply is automatically shut off. This safeguard makes it impossible to receive untreated water.

### **Features:**

The Helinos sterilizer, which in standard version guarantees sterilization of water, has:

- electronic monitoring of intensity for each lamp
- display showing total intensity as well as intensity for each lamp
- automatic shut-off when uv-dosage is too low
- cleaning brushes for each chamber
- pressure guarantee for 8,7 bar/cm<sup>3</sup>.

### **Technical details:**

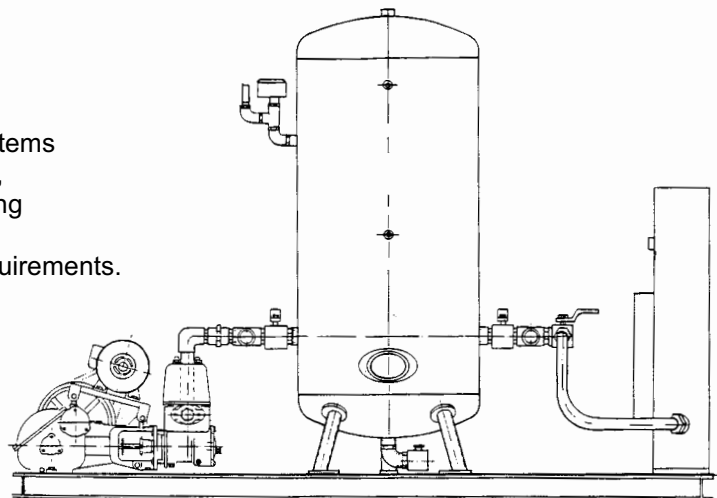
- 220 V, 50/60 Hz, 140-220 W
- dimensions: 447x294x1022 mm / 447x430x1022 mm
- capacity: 3,4 m<sup>3</sup>/h, 4,6 m<sup>3</sup>/h, 6,8 m<sup>3</sup>/h or 10,8 m<sup>3</sup>/h

The Helinos sterilizers are made with treatment chambers in ABS plastic, each unit pressure tested to 9,0 bar, checked and adjusted prior to delivery.



## **Seasafe** hydrophore units

Seasafe delivers complete hydrophore systems mounted on steel frames; including pumps, hydrophore tanks, uv-sterilizers, rehardening filters and hot water calorifiers. Capacities and dimensions according to customer requirements.



# Mooring ropes



## Timm Signal Safety mooring ropes:

**Timm Signal Safety** - an improved polypropylene product with a 50 percent higher breaking strength compared to traditional polypropylene quality.

**Timm Signal Safety** has increased resistance to abrasion.

**Timm Signal Safety** is UV-stabilized to protect it from decomposition due to ultra-violet rays.

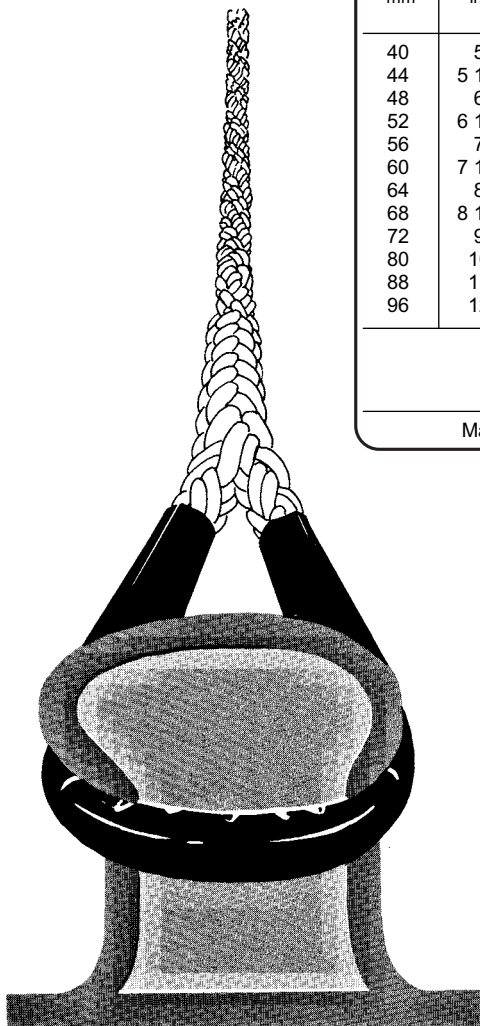
**Timm Signal Safety** is firmly anchored in quality and safety, and gives better operational economy.


**Timm Signal Safety** is supplied with 6 feet mooring eyes, protected with reinforced polyester sheathing.

## Weights and strengths 8-strand plaited mooring ropes

| Dia mm | Circ. in | Nylon<br>3-strand or plaited                                      |               |               | Timm Signal Safety<br>Plaited                                     |               |               | Polypropylene<br>Standard plaited                                 |               |               |
|--------|----------|---|---------------|---------------|---|---------------|---------------|---|---------------|---------------|
|        |          | Weight kg/220m  | Break Load kp | Break Load kN | Weight kg/220m  | Break Load kp | Break Load kN | Weight kg/220m  | Break Load kp | Break Load kN |
| 40     | 5        | 229   | 30000         | 295           | 171   | 30000         | 295           | 158   | 19400         | 190           |
| 44     | 5 1/2    | 276   | 35800         | 351           | 201   | 35000         | 343           | 192   | 23400         | 230           |
| 48     | 6        | 330   | 42000         | 412           | 245   | 41100         | 403           | 229   | 27200         | 267           |
| 52     | 6 1/2    | 384   | 48800         | 479           | 282   | 48000         | 471           | 268   | 31500         | 309           |
| 56     | 7        | 446   | 56000         | 550           | 334   | 55000         | 540           | 312   | 36000         | 354           |
| 60     | 7 1/2    | 512   | 63800         | 626           | 379   | 62100         | 609           | 359   | 41200         | 404           |
| 64     | 8        | 582   | 72000         | 707           | 431   | 70200         | 689           | 407   | 46600         | 457           |
| 68     | 8 1/2    | 654   | 81000         | 795           | 491   | 79500         | 780           | 460   | 52700         | 517           |
| 72     | 9        | 738   | 90000         | 883           | 550   | 88600         | 869           | 515   | 58500         | 574           |
| 80     | 10       | 911   | 110000        | 1080          | 676   | 107800        | 1058          | 638   | 72000         | 707           |
| 88     | 11       | 1102  | 131000        | 1285          | 818   | 129400        | 1269          | 772   | 86400         | 848           |
| 96     | 12       | 1313  | 154000        | 1510          | 974   | 153100        | 1502          | 916   | 102000        | 1001          |
|        |          | Specific gravity: 1,14<br>Melting point: 250°C<br>Elongation: 45% |               |               | Specific gravity: 0,91<br>Melting point: 165°C<br>Elongation: 16% |               |               | Specific gravity: 0,91<br>Melting point: 165°C<br>Elongation: 16% |               |               |

Manufactured and tested in accordance with ISO standards and DIN normen.



 **Approved by:**  
Det Norske Veritas  
Lloyd's Register of Shipping



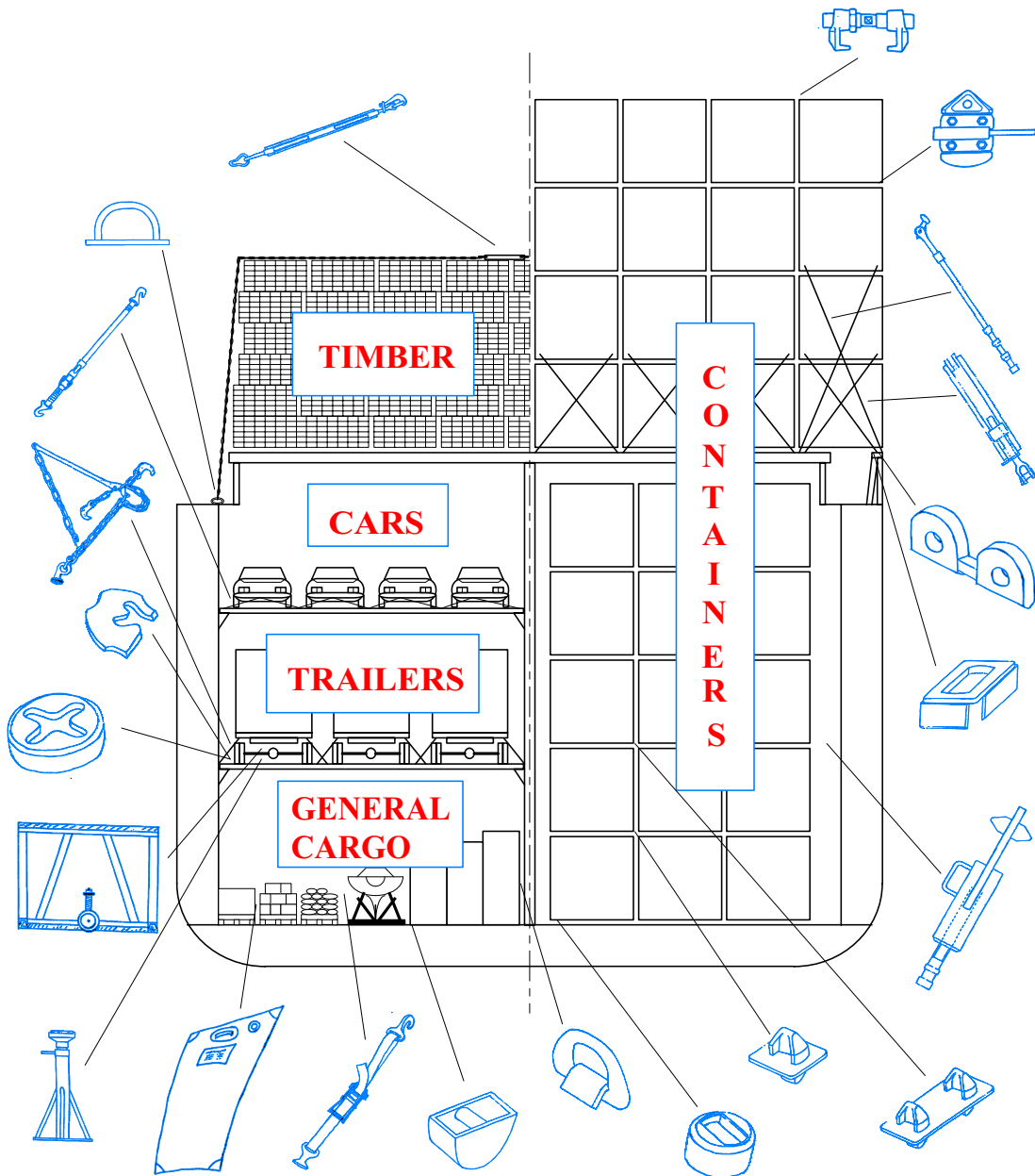
**Seasafe Transport A/S**

**YOU NAME IT - WE LASH IT**

Filipstadveien 5, N-0250 OSLO, Norway Phone: + 47 - 23 23 96 00 Telefax: + 47 - 23 23 96 01 E-mail: post@seasafe.no



# Cargo Securing Systems



**Seasafe Transport A/S**

**YOU NAME IT - WE LASH IT**

Filipstadveien 5, N-0250 OSLO, Norway Phone: + 47 - 23 23 96 00 Telefax: + 47 - 23 23 96 01 E-mail: post@seasafe.no

Notes



**Seasafe Transport A/S**

**YOU NAME IT - WE LASH IT**

*Filipstadveien 5, N-0250 OSLO, Norway Phone: + 47 - 23 23 96 00 Telefax: + 47 - 23 23 96 01 E-mail: [post@seasafe.no](mailto:post@seasafe.no)*

# Find Us Here



**Seasafe Transport A/S**

Mohn Gaarden  
Filipstadveien 5  
N-0250 OSLO  
Norway

Phone: + 47 - 23 23 96 00  
Telefax: + 47 - 23 23 96 01  
E-mail: [post@seasafe.no](mailto:post@seasafe.no)